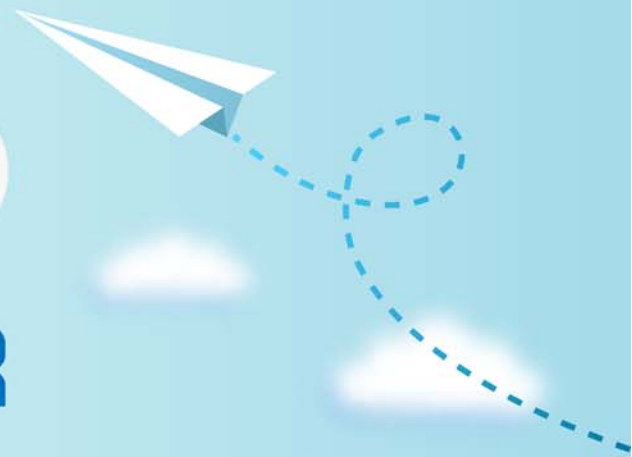


CERTPARK

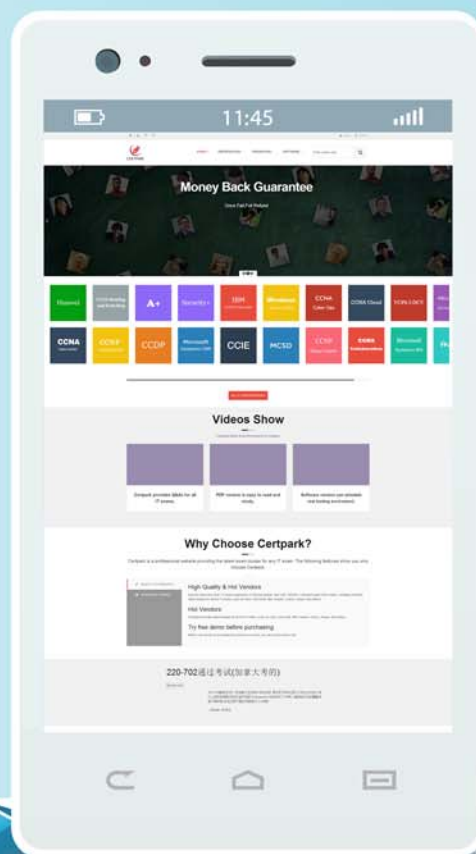


QUESTION & ANSWER



CERTPARK.COM

Accurate Study Guides,
High Passing Rate!
provides update
free of charge
in one year!



<https://www.certpark.com>

Exam : **C_IBP_2305**

Title : SAP Certified Application
Associate - SAP IBP for
Supply Chain (2305)

Version : DEMO

1.Which of the following data can be tracked using a change-history-enabled key figure? Note: There are 3 correct answers to this question.

- A. Key figure type
- B. Modified date
- C. Scenario ID
- D. Reason code
- E. Attributes

Answer: B D E

2.Which of the following solutions should be satisfied with violations penalized by the objective function of the time-series supply optimizer? Note: There are 3 correct answers to this question. Not adhering to maximum transport values

- A. Violation of minimum aggregated inventory values
- B. Violation of minimum resource utilization
- C. Not respecting production capacity
- D. Not-fully satisfied demands

Answer: ABD

3.You want to display and edit data in different Units of Measure (UOM).

Which of the following must you consider before you use the UOM? Note: There are 3 correct answers to this question.

- A. Units of measure are usually not time-dependent.
- B. Unit of measure is an attribute of a master data type, such as Product.
- C. Units of measure are usually not time-independent.
- D. Analytics provide the user with the option to select the target unit of measure.
- E. Conversion to the target unit of measure is handled by SAP IBP Excel UI

Answer: A B D

4.Which pre-processing steps can be used to cleanse historical sales data before generating a statistical forecast in SAP IBP? Note: There are 2 correct answers to this question.

- A. Substitute Missing with Mean or Median in Sales History
- B. Intermittency Detection and Correction in Sales History
- C. Promotion Sales Lift Elimination
- D. Bias Detection and Correction in Sales History

Answer: A C

5.You have to be logged on to two separate SAP IBP tenants.

What can help you differentiate the appearance of their user interfaces? Note: There are 2 correct answers to this question.

- A. Setting a separate theme for the Home page in the Web UI.
- B. Add the system name and tenant information from the About section to the Home page.
- C. Defining a different default planning area via the User Preferences.
- D. Having a different set of tiles in the Home group of apps.

Answer: A B

