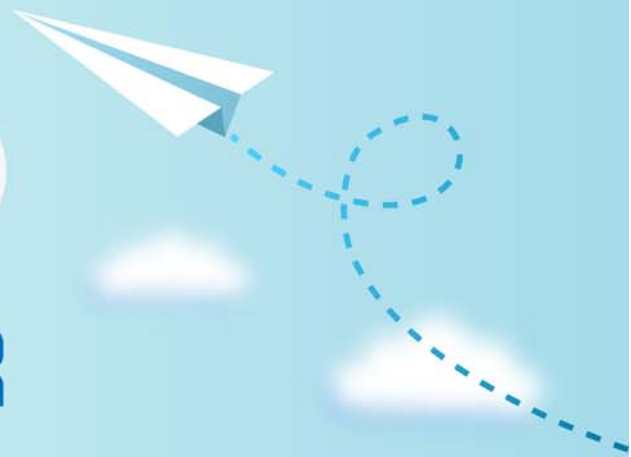


# CERTPARK

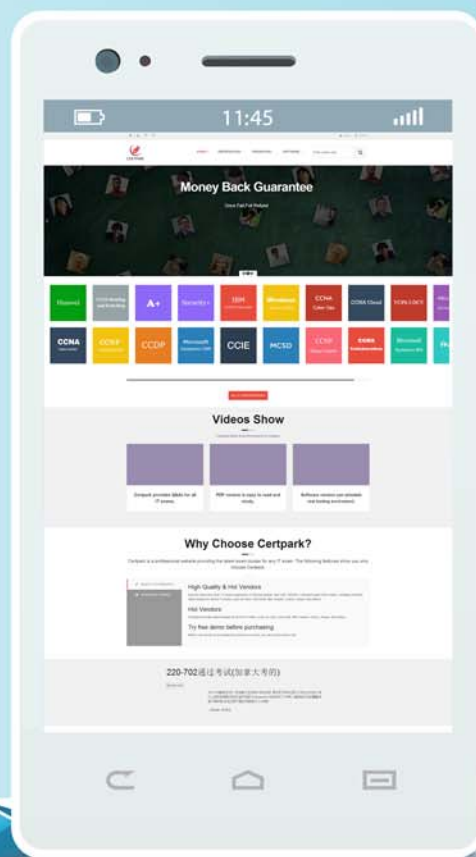


## QUESTION & ANSWER



CERTPARK.COM

Accurate Study Guides,  
High Passing Rate!  
provides update  
free of charge  
in one year!



**Exam** : **C\_MDG\_1909**

**Title** : SAP Certified Application  
Associate - SAP Master  
Data Governance

**Version** : DEMO

1. Your customer defined KPIs for the SAP Master Data Governance (MDG) processes. The change requests shall NOT exceed certain duration time limits.

Which actions do you perform? There are 3 correct answers to this question.

- A. Set up an edition to control the maximum runtime of a change request
- B. Define thresholds with the generic time management BAdI
- C. Assign a service level agreement (SLA) to the change request type
- D. Define change request priorities, reasons, and rejection reasons
- E. Configure MDG analytical features to monitor the KPIs

**Answer:** C,D,E

2. Your customer wants to filter the SAP Master Data Governance business partner data before it is replicated to a non-SAP target system.

What option do you have? Please choose the correct answer.

- A. Switch on the filter option of the Service Mapping Tool (SMT)
- B. Apply the Customer-Vendor-Integration (CVI) filter BAdI
- C. Enhance the SAP Business Workflow (BWF) with a filter step
- D. Define the filters in the Data Replication Framework (DRF).

**Answer:** D

3. You need to create checks in Business Rule Framework plus to implement validation rules for materials.

Which activities do you perform? There are 2 correct answers to this question.

- A. Create the CHECK\_MATERIAL function.
- B. Enable the material entity in the data model for validation.
- C. Insert a validation rule into the workflow.
- D. Define rule sets and insert required rules.

**Answer:** C,D

4. In which SAP Master Data Governance customizing activity can you define the SLAs (days and hours by priority)? Please choose the correct answer.

- A. Define Change Request Actions
- B. Configure Properties of Change Request Step
- C. Define Priorities for Change Request
- D. Create Change Request Type

**Answer:** D

5. Where do you configure the link between an SAP standard role and an SAP Master Data Governance (MDG) UI? Please choose the correct answer.

- A. SAP MDG data model definition
- B. SAP MDG UI BAdI
- C. Floor plan header data
- D. Application configuration of the role

**Answer:** D