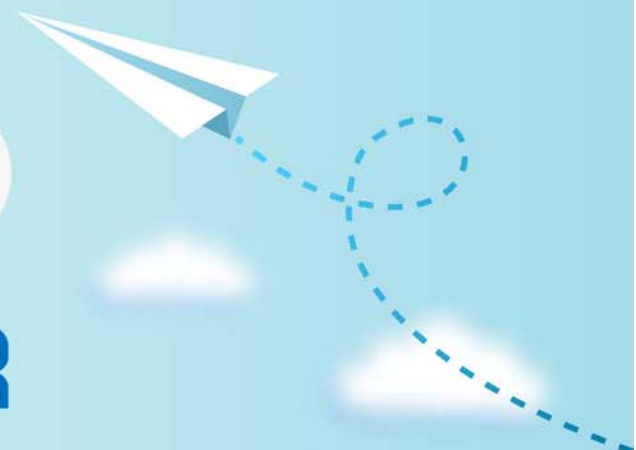


CERTPARK

QUESTION & ANSWER



CERTPARK.COM

Accurate Study Guides,
High Passing Rate!
provides update
free of charge
in one year!



<https://www.certpark.com>

Exam : **C_S4CFI_2202**

Title : SAP Certified Application
Associate - SAP S/4HANA
Cloud (public) - Finance
Implementation

Version : DEMO

1.Which substitution types can you configure for journal entry substitution rules? (Choose three.)

- A. Substitute with constant value
- B. Substitute with field value
- C. Substitute with previous value
- D. Clear field value
- E. Substitute with formula value

Answer: A,C,D

2.Which tool is used for the liquidity planning in SAP S/4HANA Cloud?

- A. SAP Integrated Business Planning
- B. SAP Analytics Cloud
- C. SAP Liquidity Planner
- D. SAP BPC Optimized for SAP S/4HANA

Answer: D

Explanation:

Reference: <https://nttdata-solutions.com/us/local-blog/cash-management-and-liquidity-planning-with-bpc-in-s4hana-finance/#:~:text=Liquidity%20planning%20is%20based%20on,to%20the%20financial%20planning%20solution>

3.Which functionalities are supported by the SAP Fiori Test Your Processes app? (Choose two.)

- A. Remediate failed test scenarios
- B. Migrate test plans for execution
- C. Import custom test plans
- D. Create or change test plans

Answer: C,D

4.Which activity do you perform during the data load preparation?

- A. Resolve data issues from the simulation process
- B. Simulate data load in the new cloud system
- C. Define specifications for data extraction on legacy system
- D. Fill in migration templates with legacy data

Answer: A

Explanation:

Reference: <https://blogs.sap.com/2017/08/03/sap-activate-explore-phase-use-fit-to-standard-to-confirm-business-process-fit-and-identify-gaps-in-your-sap-s4hana-cloud-implementation/>

5.Which of the following objects must be available before legacy G/L account balances can be completely migrated in the SAP S/4HANA Cloud system? (Choose two.)

- A. Business partner
- B. Business area
- C. Fixed asset
- D. Internal order

Answer: C,D

Explanation:

Reference: https://help.sap.com/doc/69dd0f1ef0034261ab6e617e0b2beb21/2020.000/en-US/MigrationObjects_OP_EN.pdf