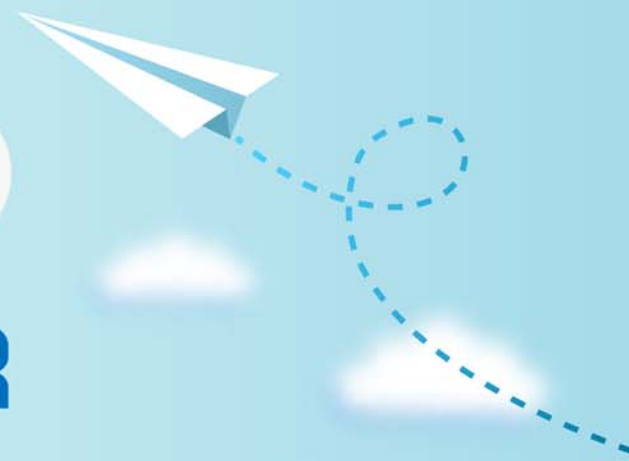


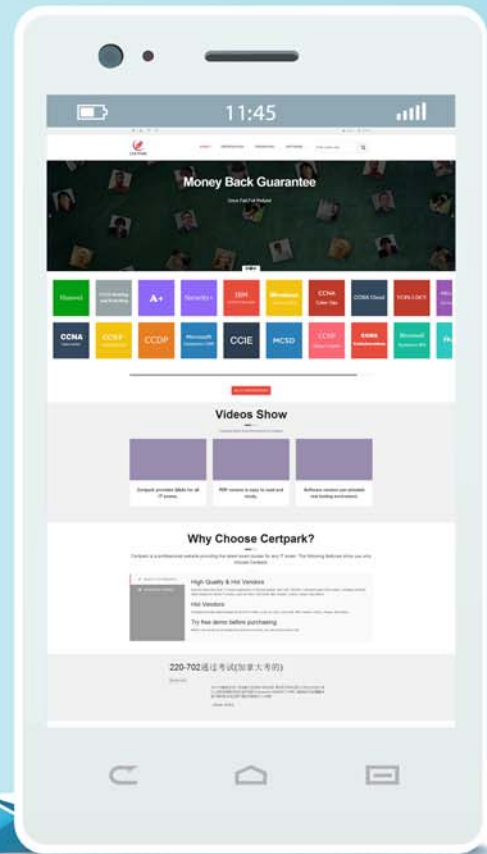
CERTPARK

QUESTION & ANSWER



CERTPARK.COM

Accurate Study Guides,
High Passing Rate!
provides update
free of charge
in one year!



Exam : **C_S4CS_2402**

Title : SAP Certified Associate -
Implementation Consultant -
SAP S/4HANA Cloud Public
Edition - Sales

Version : DEMO

1.You work on a Sell from Stock (BD9) process in SAP S/4HANA Cloud Public Edition.
What must be created to confirm a customer's intention to buy the products?

- A. Sales quotation
- B. Outbound delivery
- C. Sales inquiry
- D. Sales order

Answer: D

2.How can you define the relationship between business roles and business catalogs?

- A. A business role restricts access to one or more business catalogs.
- B. A business catalog is a collection of one or more business roles.
- C. A business role is a collection of one or more business catalogs.
- D. A business catalog restricts access to one or more business roles.

Answer: A

3.Which technologies should you use to integrate SAP S/4HANA Cloud Public Edition with another SAP public cloud solution? Note: There are 2 correct Answer to this question.

- A. Predelivered APIs
- B. SAP Process Orchestration
- C. SAP Cloud Connector
- D. SAP Integration Suite

Answer: A,D

4.Where are the manual test cases created for customer User Acceptance Testing?

- A. SAP Solution Manager
- B. Test Automation Tool
- C. SAP Cloud ALM
- D. SAP Signavio Process Navigator

Answer: C

5.If a customer wants to develop their own custom application and integrate it with SAP S/4HANA Cloud Public Edition, what tools would you recommend to develop the app? Note: There are 2 correct Answer to this question.

- A. SAP Business Application Studio
- B. SAP Cloud Portal Service
- C. SAP HANA Cloud
- D. SAP Build

Answer: A,D