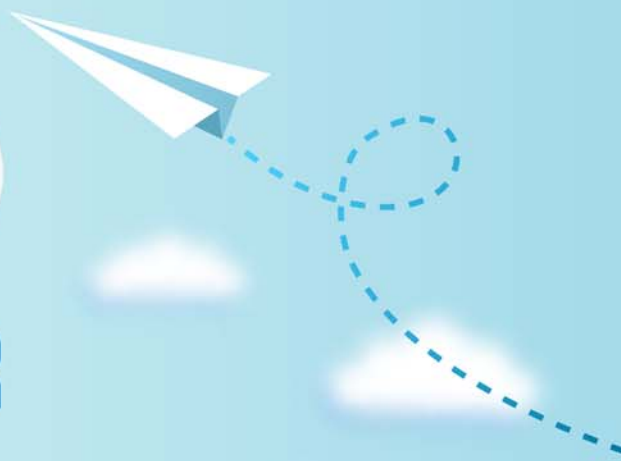


# CERTPARK



## QUESTION & ANSWER



CERTPARK.COM

Accurate Study Guides,  
High Passing Rate!  
provides update  
free of charge  
in one year!



**Exam : C\_S4CWM\_2202**

**Title :** SAP Certified Application  
Associate - SAP S/4HANA  
Cloud (public) - Warehouse  
Management  
Implementation

**Version : DEMO**

1.What is the correct sequence of process steps in SAP Best Practice Warehouse Inbound Processing (3BR)?

- A. Create inbound delivery. Create handling unit. Assign or create batch. Post goods receipt. Confirm putaway task
- B. Create inbound delivery. Assign or create batch. Create handling unit. Post goods receipt. Confirm putaway task
- C. Create inbound delivery. Post goods receipt. Assign or create batch. Create handling unit. Confirm putaway task.
- D. Create inbound delivery. Assign or create batch. Post goods receipt. Create handling unit. Confirm putaway task

**Answer: B**

2.Which activity do you perform during the data load preparation?

- A. Simulate data load in the new cloud system
- B. Define specifications for data extraction on legacy system
- C. Fill in migration templates with legacy data
- D. Resolve data issues from the simulation process

**Answer: B**

3.Which technology is used to integrate SAP S/4HANA Cloud with other SAP and non-SAP applications?

- A. SAP Change and Transport System
- B. Direct connectivity
- C. SQL Connect function
- D. SAP Landscape Transformation Replication Server

**Answer: B**

4.In the SAP Best Practice scenario SAP EWM Integration - Outbound Processing to Customer (2VK), which roles are used in the SAP S/4HANA Cloud system? Note: There are 2 correct answers to this question.

- A. Shipping Specialist
- B. Internal Sales Representative
- C. Order Fulfillment Manager
- D. Warehouse Clerk

**Answer: A,B**

5.In SAP Best Practice SAP EWM Integration - Customer Returns (2VO), which activities are carried out in the SAP EWM system? Note: There are 2 correct answers to this question.

- A. Create a material document
- B. Post a goods receipt
- C. Create a return delivery
- D. Create a posting change

**Answer: B,D**