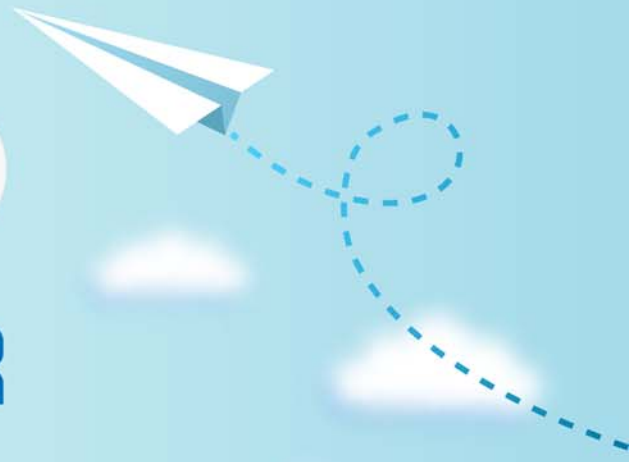


CERTPARK

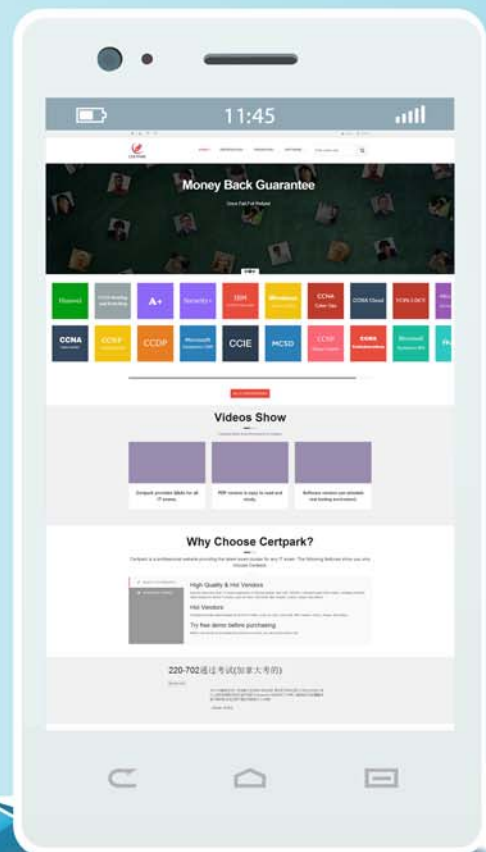


QUESTION & ANSWER



CERTPARK.COM

Accurate Study Guides,
High Passing Rate!
provides update
free of charge
in one year!



<https://www.certpark.com>

Exam : **C_SACS_2316**

Title : SAP Certified Application
Associate - SAP Analytics
Cloud Story Design

Version : DEMO

1. Where can you define a calculation for a table? Note: There are 3 correct answers to this question.

- A. Table
- B. Model
- C. Calculation editor
- D. Story
- E. Page

Answer: ACD

Explanation:

You can define a calculation for a table in three ways:

Table: You can add a simple calculation by selecting two measures in a table, right-clicking, choosing Add calculation, and choosing the calculation you want. You can also add a repeating or single column or row to a table by right-clicking on a measure or dimension and choosing Add Calculation¹.

Calculation editor: You can open the calculation editor from the drop-down menu of Measures or Dimensions in the Designer Panel and create complex calculations for a chart or table. For each type of calculation, a new calculated member is created. You can also use dimension attributes as part of a calculation².

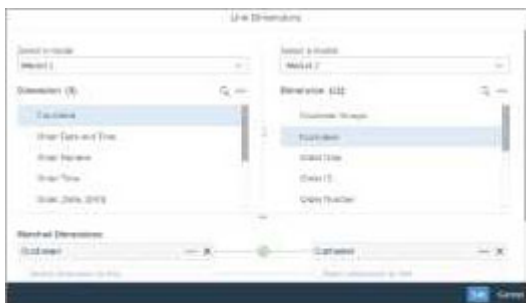
Story: You can create a calculated measure in the Builder pane of a story. When setting up your calculation, you apply the typical formula functions, conditions, and operators to the data contained in your model. Calculated measures allow you to perform mathematical and Boolean operations on your data¹.

Reference:

1: Calculating Data in Stories - SAP Learning

2: SAP Analytics Cloud In-story Calculation Series – An Introduction

2. You want to blend data in a story from two models (see graphic below). Model 1 is the primary model. Which link type returns what data Primary All Intersection



Model 1 Customer
Customer A
Customer C

Model 2 Customer
Customer A
Customer B

Which link type returns what data?

- A. Primary
- B. All
- C. Intersection

Answer: C

Explanation:

The link type determines how the data from the primary and secondary models are blended in a story. There are three link types: Primary, All, and Intersection¹.

Primary: Only the data from the primary model that matches the data from the secondary model is

displayed. This is equivalent to an inner join in SQL.

All: All the data from both models is displayed, regardless of whether they match or not. This is equivalent to a full outer join in SQL.

Intersection: Only the data that exists in both models is displayed. This is equivalent to an intersection in set theory.

In this case, the link type that returns what data is Intersection, because it only shows the data that is common to both models, such as Customer A and Customer B. Customer C and Customer D are excluded because they do not exist in both models.

Reference: 1: Blending Data from Multiple Models

3. When you save a story as a template, what happens?

- A. Custom widgets are removed.
- B. Custom formatting is retained.
- C. Standard widgets remain intact.
- D. All data is removed.

Answer: D

Explanation:

When you save a story as a template, you can use it as a starting point for creating new stories with the same layout and formatting. However, all the data from the original story is removed and replaced by placeholders for charts, tables, maps, input controls, and value driver trees. This way, you can easily add new data sources and models to the template without affecting the existing ones¹. Custom formatting, such as story background, chart color palettes, fonts, and borders, is retained in the template². Custom widgets, such as images, shapes, texts, and buttons, are also preserved in the template³. Standard widgets, such as charts, tables, maps, input controls, and value driver trees, are converted into empty placeholders that can be filled with new data³.

Reference:

1: Create and Use Story Templates

2: Story Templates in SAP Analytics Cloud

3: Building Stories from a Template

4. In a story, to which of the following is chart scaling applied? Note: There are 2 correct answers to this question.

- A. Specific page
- B. All measures
- C. All pages
- D. Specific measure

Answer: AD

Explanation:

Chart scaling is a feature that ensures that you have a meaningful display of values across multiple charts in a story. By default, charts are not scaled, which can lead to incorrect data analysis, particularly if users are not paying attention to the actual values displayed in the chart¹.

Chart scaling is applied to the following:

Specific page: Chart scaling is applied to all of the charts on a page, but the scaling may be different for the same measure on different pages, because the scaling factor is calculated separately for each

page1.

Specific measure: Chart scaling is applied to a specific measure in a chart, and it affects all the charts that contain that measure on the same page. You can exclude charts from the scaling by selecting the chart and choosing Exclude from Scaling in the context menu1.

Chart scaling is not applied to the following:

All measures: Chart scaling is not applied to all the measures in a story, only to the ones that are selected for scaling. You can select which measures to scale by choosing Scale Measures in the context menu of any chart on a page1.

All pages: Chart scaling is not applied to all the pages in a story, only to the ones that have scaling enabled. You can enable or disable scaling for a page by choosing Enable Scaling or Disable Scaling in the context menu of any chart on a page1.

Reference: 1: Chart Scaling - SAP Learning

5.Which of the following are required to configure a section in a story? Note: There are 2 correct answers to this question.

- A. Optimized Design Experience
- B. Dimension
- C. Classic Design Experience
- D. Widget

Answer: BD

Explanation:

A section is a way to group and organize widgets in a story based on a dimension.

To create a section, you need to have the following:

A dimension that you want to use as the basis for grouping the widgets. You can choose any dimension from any model in the story.

One or more widgets that you want to display in each section. You can add any type of widget, such as charts, tables, geo maps, etc.

You can create sections in both the Classic Design Experience and the Optimized Design Experience, but the process is slightly different. Therefore, the correct answer is dimension and widget, as they are required to configure a section in a story