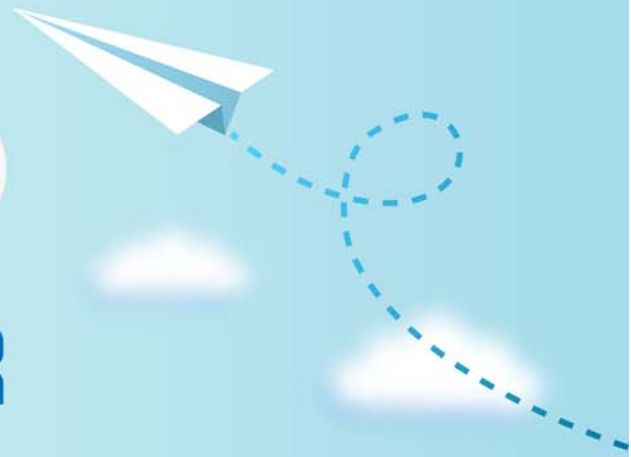


# CERTPARK

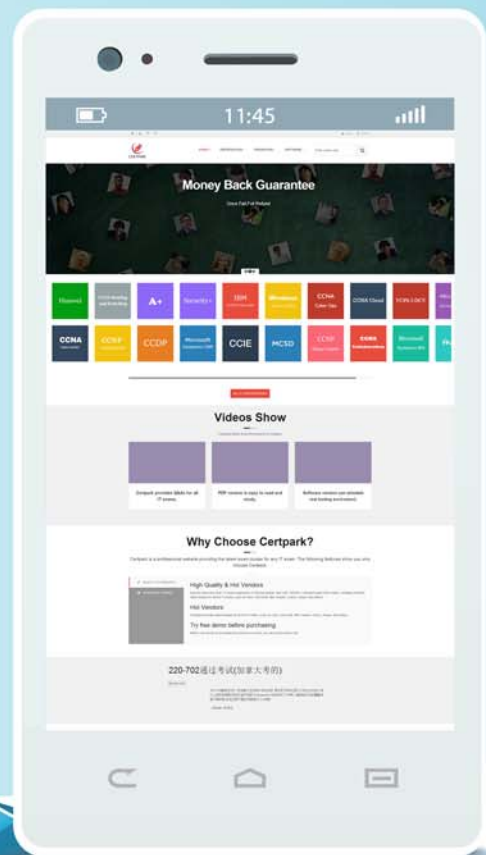


## QUESTION & ANSWER



CERTPARK.COM

Accurate Study Guides,  
High Passing Rate!  
provides update  
free of charge  
in one year!



**Exam** : **C\_SAC\_2402**

**Title** : SAP Certified Associate -  
Data Analyst - SAP  
Analytics Cloud

**Version** : DEMO

1.What source system can you connect to with a live connection?

- A. SAP ERP Central Component
- B. SAP SuccessFactors
- C. SAP Business ByDesign Analytics
- D. SAP Datasphere

**Answer: D**

2.You are using a live connection for a model. Where is the data stored?

- A. Public dataset
- B. SAP Analytics Cloud model
- C. Source system
- D. Embedded data set

**Answer: C**

3.You are using a live connection for a model. Where can you define data security?

- A. Source system
- B. Data access control
- C. SAP Analytics Cloud model
- D. SAP Analytics Cloud role

**Answer: A**

4.What must you use to transform data in a dataset using if/then/else logic?

- A. Calculations editor
- B. Custom expression editor
- C. Formula bar
- D. Transform bar

**Answer: B**

5.You import data into a dataset. One of the columns imported is Year, and SAP Analytics Cloud interprets it as a measure.

How can you ensure that it is treated as a calendar year?

- A. Change the Year measure to a dimension in the dataset.
- B. Includes the Year measure in a level-based time hierarchy in the dataset.
- C. Insert a character into the Year measure using the transform bar.
- D. Add the month as a suffix to the Year measure.

**Answer: A**