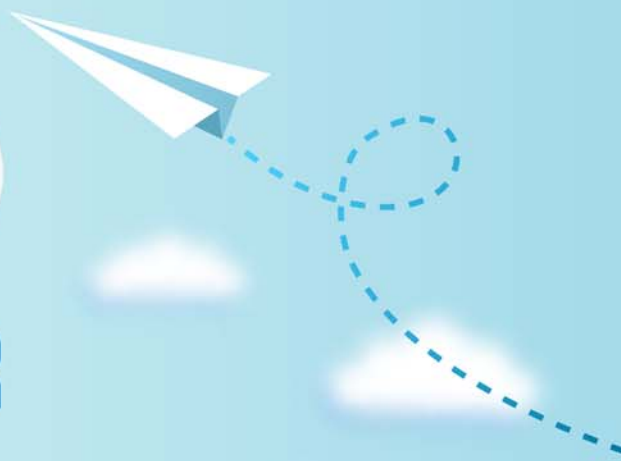


CERTPARK



QUESTION & ANSWER



CERTPARK.COM

Accurate Study Guides,
High Passing Rate!
provides update
free of charge
in one year!



Exam : **C_SAPXIMP_20**

Title : SAP Certified Technology
Associate - SAP Fiori
Implementation and
Configuration (Wave V)

Version : Demo

1. When an App calls OData service to retrieve some data, Gateway component in front end server?

- A. Call web dispatcher and get data from backend server.
- B. Call SAP HANA system to get data from back end server.
- C. Know system alias for service and get data from backend server.
- D. Know system alias for service and get data from web dispatcher.

Answer: C

2. In SAP Hana Server side encryption, which of the below encryption type is used for storing internal root keys in the tile system?

- A. Data Volume Encryption
- B. Secure store in the file system (SSFS)
- C. Internal Data Encryption Service
- D. All of the above

Answer: B

3. Where does the initial authentication occur when you call a transactional SAP Fiori app from the Launchpad?

- A. ABAP front-end server
- B. ABAP back-end server
- C. SAP user management engine
- D. SAP HANA XS engine

Answer: A

4. Which of the below statements is/are true about TREX? There are 3 correct answers to this question.

- A. TREX client process the requests, it indexes and classifies documents and answers search queries.
- B. TREX is based on client/server architecture.
- C. TREX is licensed as a separate product
- D. The SAP NetWeaver standalone engine Search and Classification TREX provides SAP applications with numerous services for searching, classification, and text-mining in large collections of documents.
- E. TREX searches and analysis unstructured data as well as for searching in and aggregating across business objects (structured data).

Answer: B,D,E

5. Once you create a search connector in an extension component, all search models from the original component are

- A. transferred to different layer components.
- B. transferred into the higher layer components.
- C. found in original component.
- D. None of the above

Answer: B