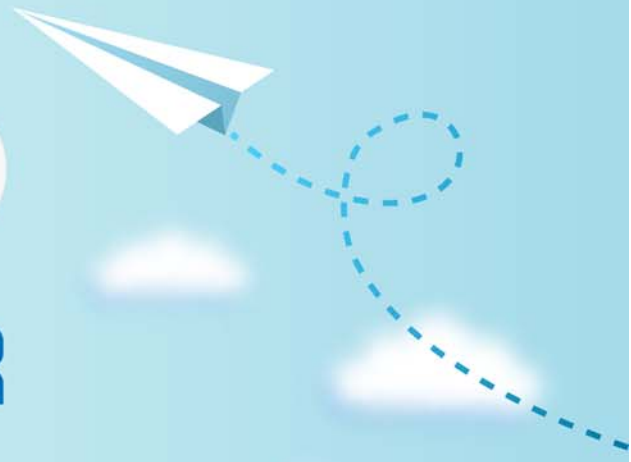


CERTPARK

QUESTION & ANSWER



CERTPARK.COM

Accurate Study Guides,
High Passing Rate!
provides update
free of charge
in one year!



<https://www.certpark.com>

Exam : **C_SEN_2011**

Title : SAP Certified Application
Associate - SAP Enable
Now

Version : DEMO

- 1.You have created multiple references for an object in your workarea structure. You would like an overview of how many references you have created and where they are located. How does the Producer support this requirement? Note: There are 2 correct answers to this question.
- A. References are automatically displayed in the Description field of the object.
 - B. Objects referenced multiple times have a different color in the Project Explorer tree.
 - C. In the Reference Tree and Reference List, you can jump directly to a linked object in the tree.
 - D. Numbers displayed in front of the object indicate the number of references.

Answer: C,D

- 2.Your customer wants to store all SAP Enable Now documentation within SAP Solution Manager. What do you tell the customer?
- A. The integration is possible with any version of SAP Solution Manager on both client side and server side.
 - B. The integration is done from within Manager via scheduled synchronization.
 - C. The integration is possible between Producer and SAP Solution Manager 7.2 but will only provide deep links to the documentations.

Answer: C

- 3.In Producer, what must you consider when you modify files manually (not using the GUI)? Note: There are 2 correct answers to this question.
- A. Producer uses the unmodified files from the workarea cache until a refresh is triggered.
 - B. Producer displays the results of file modifications after the file is saved.
 - C. Producer is NOT automatically notified of the manual changes.
 - D. Producer reports file modifications to the Manager when file editing is finished.

Answer: A,C

- 4.What are characteristics of workflows in the content development process? Note: There are 3correct answers to this question.
- A. Workflows are assigned at the workarea level only.
 - B. Workflows may be defined for any content development process.
 - C. Multiple workflows may be available for use in a single workarea.
 - D. All statuses must be used in each workflow created.
 - E. Only one workflow may be assigned to a single SAP Enable Now object.

Answer: B,C,E

- 5.What do you have to consider when you set up a workflow? Note: There are 2 correct answers to this question.
- A. You must create permissions based on roles to secure your workflow.
 - B. You must set watchers for each transition.
 - C. There must be an appropriate set of statuses matching the lifecycle requirements of the customer.
 - D. Each workflow status is restricted to be either the start or end point of a transition.

Answer: A,C