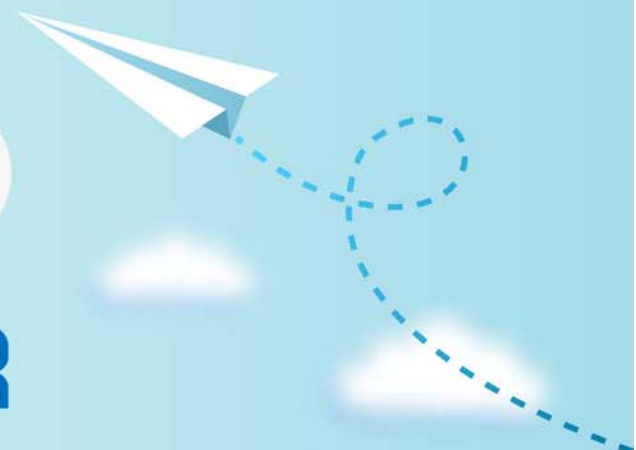


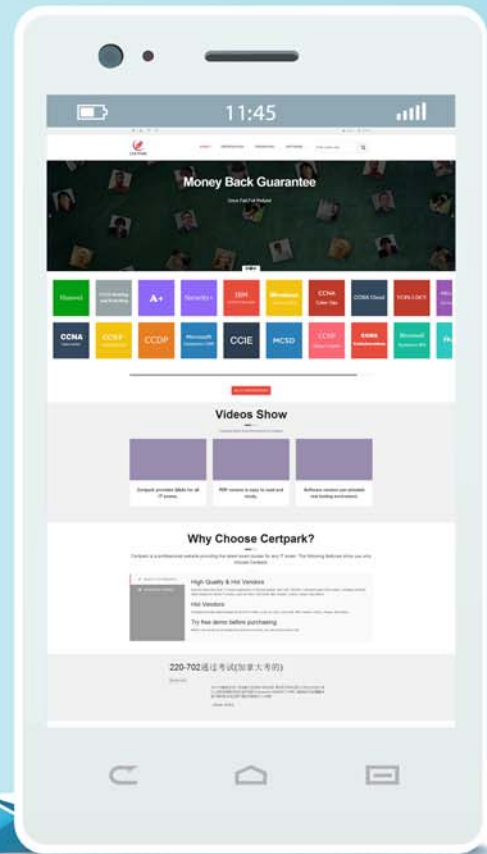
# CERTPARK

QUESTION & ANSWER



CERTPARK.COM

Accurate Study Guides,  
High Passing Rate!  
provides update  
free of charge  
in one year!



**Exam** : **C\_SMPADM\_30**

**Title** : SAP Mobile Platform Native  
and Hybrid Application  
Administration (SMP 3.0)

**Version** : DEMO

1.Which of the following services are hosted on the HANA Cloud Platform? Note: There are 3 correct answers to this question.

- A. SAP HANA DBServices
- B. SAP HANA Enterprise Cloud Services
- C. SAP HANA One Services
- D. SAP HANA AppServices
- E. SAP HANA Infrastructure Services

**Answer:** A,D,E

2.What size does the server log file grow to before it rolls over?

- A. 10
- B. 15
- C. 20
- D. 25

**Answer:** C

3.On the HANA Cloud Platform Mobile Services (HCPms) main menu, what does the SAP Discovery Service option provide?

- A. Configuration information needed to automatically set up the push services for Android, Apple, BlackBerry and Windows.
- B. Connected backend system information for both the cloud and on premise systems so this system information is available to SAP HANA Cloud Integration service.
- C. Configuration information necessary for a user to enroll a device with SAP Mobile Secure.
- D. Configuration information for registered device that is used to create logging entries with the details of the devices tied to the system logs.

**Answer:** C

4.Which of the following options are possible if your device needs to communicate with multiple backend systems? Note: There are 3 correct answers to this question.

- A. Use X.509 certificate when connecting to an SAP backend system
- B. Use Kerberos authentication when connecting to any backend system
- C. Use basic authentication when connecting to any backend system
- D. Use SAP SS02 Token when connecting to an SAP backend system
- E. Use SAML2 certificate when connecting to any backend system

**Answer:** A,C,D

5.What is the Application Performance Standard (SAPS)? there are 2 correct answers.

- A. A hardware independent unit of measurement
- B. A measurement that is valid only for OData-based applications
- C. An SAP standard used to calculate network bandwidth
- D. A derived measurement using the sales and distribution benchmark

**Answer:** A,D