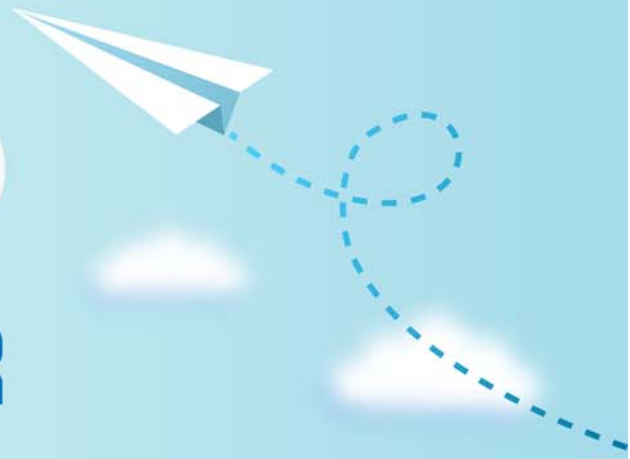


CERTPARK



QUESTION & ANSWER



CERTPARK.COM

Accurate Study Guides,
High Passing Rate!
provides update
free of charge
in one year!



<https://www.certpark.com>

Exam : **C_TADM_23**

Title : SAP Certified Technology
Consultant - SAP S/4HANA
System Administration

Version : DEMO

1. In an SAP S/4HANA server system, which data can you NOT maintain for a technical user?

- A. Roles
- B. Parameters
- C. Groups
- D. Address

Answer: B

2. When performing a standard SAP HANA database system installation, which users will be created or validated during that installation? Note: There are 2 correct answers to this question

- A. SYSTEM
- B. <sid>crypt
- C. SAP<SID>
- D. sapadm

Answer: A.D

3. Which app types require SAP HANA as system database? Note: There are 2 correct answers to this question

- A. Analytical apps
- B. Classic applications
- C. Fact sheet apps
- D. Transactional apps

Answer: A.C

4. For AS ABAP-based SAP systems, you can use Software Update Manager to update which of the following? Note: There are 2 correct answers to this question

- A. SAP kernel
- B. Software component SAP_BASIS
- C. SAP Host Agent
- D. Database system

Answer: A.B

5. How does a Transport of Copies differ from a Workbench Request? Note: There are 2 correct answers to this question

- A. When creating the transport request, a target system without a consolidation route can be selected
- B. No cofile is created, when releasing the transport request with the Transport Organizer (SE09).
- C. When importing, the transport request is not forwarded to subsequent delivery systems.
- D. After the import, repository objects in the target system are classified as copies

Answer: C.D