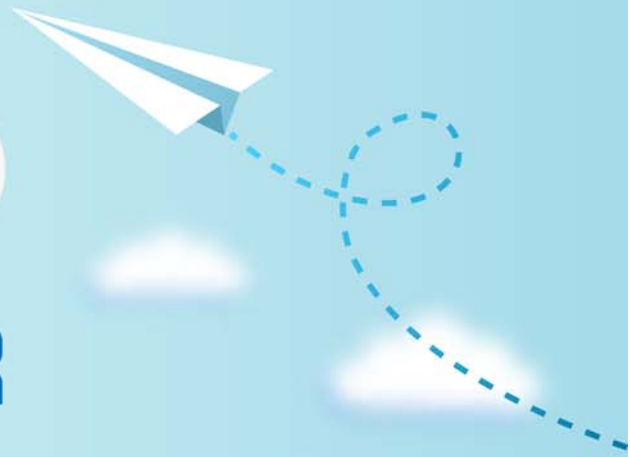


# CERTPARK

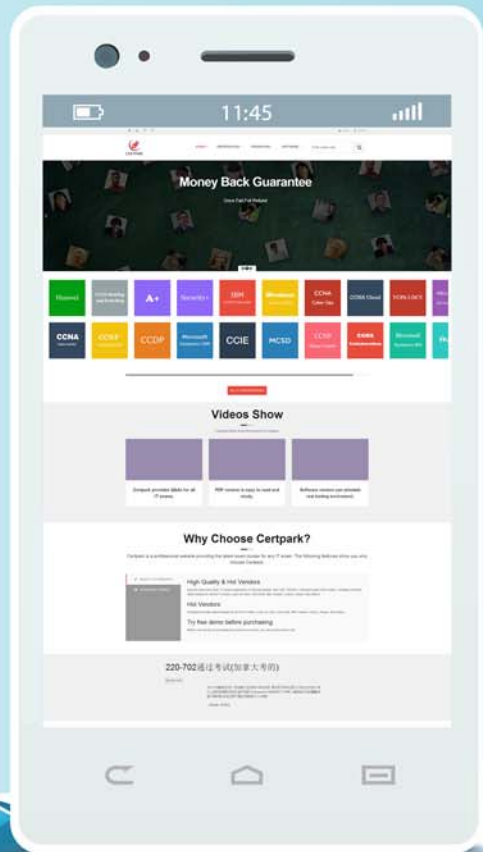


## QUESTION & ANSWER



CERTPARK.COM

Accurate Study Guides,  
High Passing Rate!  
provides update  
free of charge  
in one year!



**Exam** : **C\_TFG51\_2211**

**Title** : SAP Certified Application  
Associate - SAP Fieldglass  
Contingent Workforce  
Management

**Version** : DEMO

1.What data object ensures that invoices coming out of SAP Fieldglass include the appropriate tax and location information?

- A. MSP Fees
- B. Invoice Tax Information
- C. Rate Components
- D. Advisors

**Answer: B**

2.By default, what is the maximum number of reports that can be scheduled at one time?

- A. 25
- B. 75
- C. 100
- D. 50

**Answer: C**

3.What is the minimum number of Shifts required when creating a Rate Schedule?

- A. 1
- B. 0
- C. 2
- D. 3

**Answer: A**

4.Which supplier profile detail will allow the buyer to transact with the supplier for contingent workers?

- A. Direct
- B. Profile worker
- C. Temp
- D. Services

**Answer: C**

5.What are examples of the Feature Access you can set on a User's Profile? Note: There are 3 correct answers to this question.

- A. Manage Personally Identifiable Information
- B. This User can act as Program Manager
- C. Manage User Roles
- D. Use PMO Dashboard
- E. This User can act as Coordinator/Distributor for Contingent Workflow

**Answer: ACE**