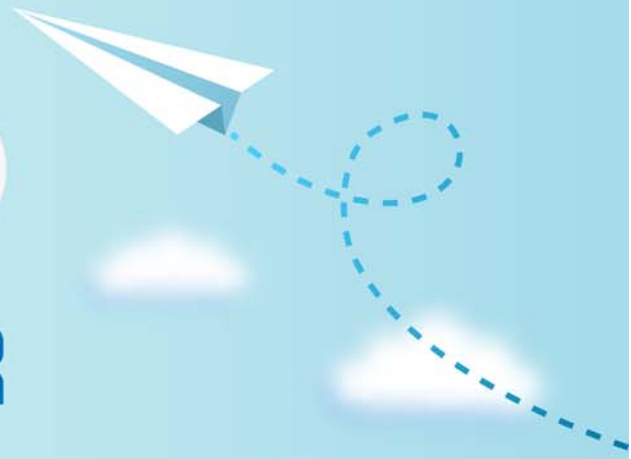


CERTPARK



QUESTION & ANSWER



CERTPARK.COM

Accurate Study Guides,
High Passing Rate!
provides update
free of charge
in one year!



<https://www.certpark.com>

Exam : **C_TFIN52_67**

Title : SAP Certified Application
Associate - Financial
Accounting with SAP ERP
6.0 EhP7

Version : DEMO

1.You want to reconcile the amounts you have in a main bank G/L account in your system with the daily bank statement. You create a single intermediate G/L bank account for each bank. All transactions with the bank are posted through the intermediate account. Which of the following indicators do you have to activate in the G/L account characteristics of the intermediate account? (Choose two)

- A. Reconciliation account for account type Bank
- B. Line item display
- C. P&L statement account
- D. Post automatically only
- E. Open item management

Answer: B,E

2.Which SAP NetWeaver component ensures company-wide unification of data and information in heterogeneous IT environments?

Please choose the correct answer.

Response:

- A. Web Application Server (AS)
- B. Enterprise Portal
- C. Master Data Management
- D. Integration Broker

Answer: C

3.You entered a G/L account posting and received an error message saying that account type D (customer) is not allowed. Which object causes this error?

- A. Currency key
- B. Tolerance group
- C. Document type
- D. Field status variant

Answer: C

4.Which of the following status symbols are used in customer and vendor line item lists?

There are 3 correct answers to this question.

Response:

- A. Parked
- B. Cleared
- C. Overdue
- D. Open
- E. Not due

Answer: A,B,D

5.Which of the following are the main components of a drilldown report?

- A. Characteristics and key figures
- B. Characteristics and variables
- C. Variables and general selection criteria
- D. Variables and key figures

Answer: A