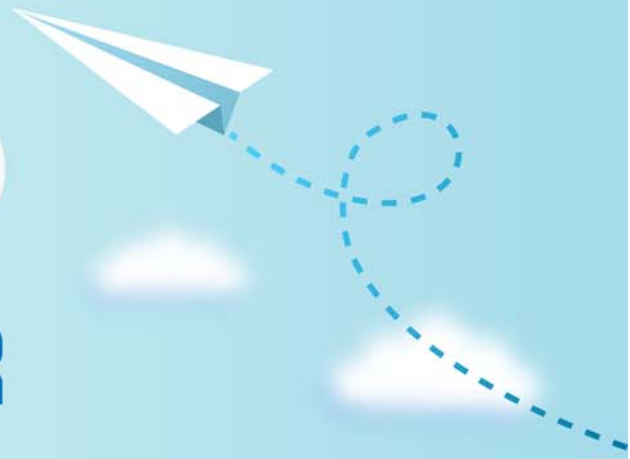


CERTPARK



QUESTION & ANSWER



CERTPARK.COM

Accurate Study Guides,
High Passing Rate!
provides update
free of charge
in one year!



<https://www.certpark.com>

Exam : C_TS422_2021

Title : SAP Certified Application
Associate - SAP S/4HANA
Production Planning and
Manufacturing

Version : DEMO

1.You want to insert an operatio at a certain time on work center. The planning direction is forward. The disired dispatching time concides with an operation that has previously been dispatched.

How does the insertion take place?

- A. The previously dispatched operation stays as is; the new operation is inserted after the the dispatched operation.
- B. The previously dispatched operation stays as is; the new operation is inserted before the the dispatched operation.
- C. The new operation is inserted at the desired time; the previously dispatched operation is moved forward.
- D. The new operation is inserted at the desired time; the previously dispatched operation is moved backward.

Answer: D

2.Which information is required when you created a production master in SAP S/4HANA?

- A. Selective screen for views
- B. Product type
- C. Base unit of measure
- D. Industry sector

Answer: A,B

3.Why would you use phantom assemblies?

- A. To simplify the structure of bills of materials
- B. To make the assignment of components easier
- C. To reduce the number of changes required in bills of materials
- D. To reduce the number of material masters
- E. To increase the number of planning levels

Answer: A,B,C

4.Which SAP application can be used for forecasting in Supply Chain Planning?

- A. Material Requirements Planning (MRP)
- B. Supply Chain Management(SCM)
- C. Integrated Business Planning (IBP)
- D. Capacity Requirements Planning (CRP)

Answer: B,C

5.For what production type are production orders used?

- A. Process manufacturing processes
- B. Replenishment controlled by control cycles
- C. Discrete manufacturing processes
- D. Period and quantity-oriented production

Answer: C