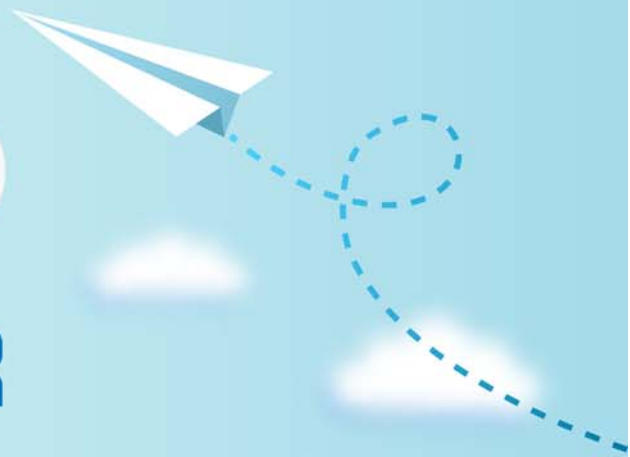


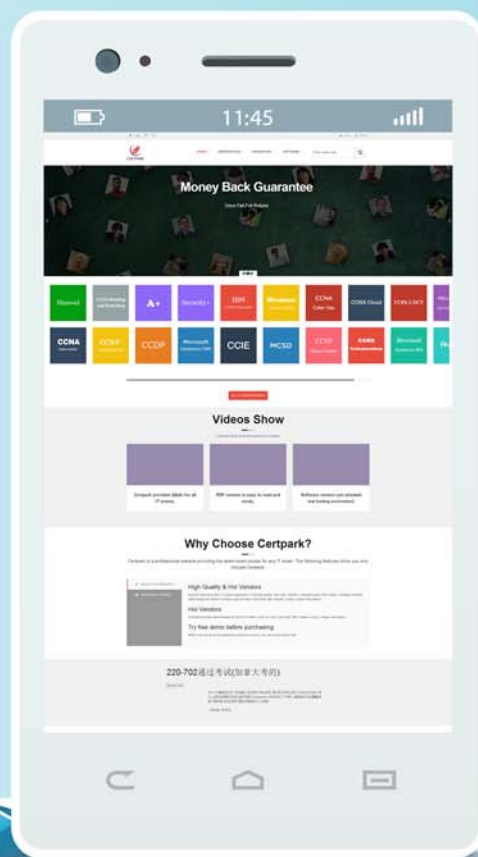
# CERTPARK

QUESTION & ANSWER



CERTPARK.COM

Accurate Study Guides,  
High Passing Rate!  
provides update  
free of charge  
in one year!



**Exam** : **C\_TS450\_1809**

**Title** : SAP Certified Application  
Associate - SAP S/4HANA  
Sourcing and Procurement -  
Upskilling for ERP Experts

**Version** : DEMO

1.Which types of field selection keys are available for purchasing documents in SAP Materials Management? Please choose the correct answer.

- A. Purchasing organization
- B. Transaction
- C. Workflow status
- D. Item category

**Answer: B**

2.What setting is defined with a movement type in SAP Materials Management? Please choose the correct answer.

- A. Valuation area
- B. Count group
- C. Valuation class.
- D. Account modification

**Answer: D**

3.What are Simplification items? Please choose the correct answer.

- A. Customers and suppliers are modeled as business master
- B. Shortening of the material number field length to 15 characters
- C. MBXX transaction for goods movements are replaced by transaction MIGO
- D. Shortening of the material number field length to 35 characters

**Answer: C**

4.Which functions exists in the SAP Fiori "Manage Purchase Requisitions" app? There are 2 correct answers to this question.

- A. Download of open purchase requisitions
- B. Addition of documents to purchase requisitions
- C. Proposal of available sources of supply
- D. Deletion of purchase requisitions.

**Answer: A,C**

5.Which indicator can you set for the manual source assignment in the 'function authorizations for buyers' user parameter (EFB) in SAP Materials Management? Please choose the correct answer.

- A. Source List
- B. Purchase Requisition
- C. Quotation.
- D. Contract

**Answer: D**