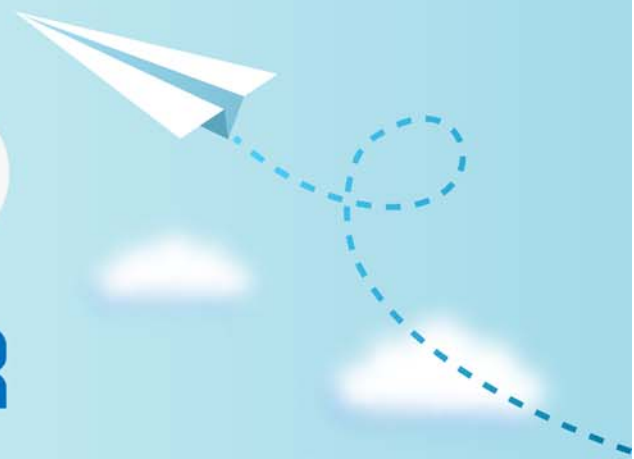


CERTPARK

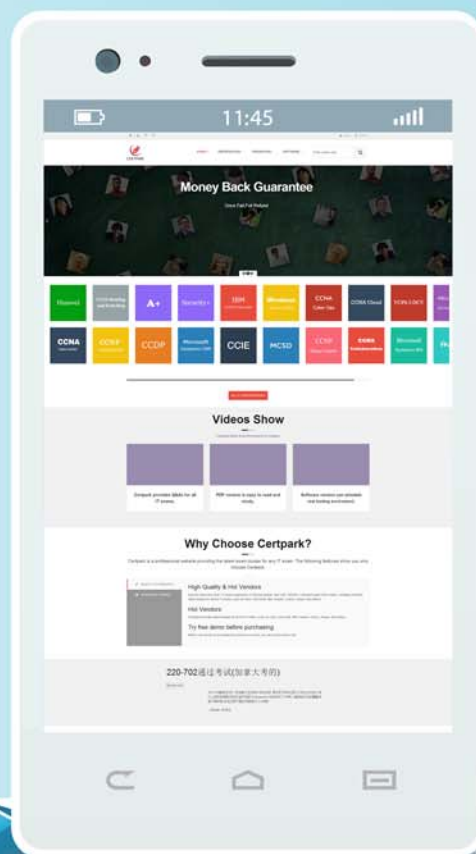


QUESTION & ANSWER



CERTPARK.COM

Accurate Study Guides,
High Passing Rate!
provides update
free of charge
in one year!



<https://www.certpark.com>

Exam : **C_TS4FI_2021**

Title : SAP Certified Application
Associate - SAP S/4HANA
for Financial Accounting
Associates (SAP S/4HANA
2021)

Version : DEMO

1.What does the document type control? Note: There are 3 correct answers to this questions.

- A. Whether postings to special periods are permitted
- B. Which posting keys are allowed for postings
- C. whether postings to secondary cost accounts are permitted
- D. Which account type are allowed for postings
- E. Whether negative posting are permitted

Answer: A,B,D

2.What are the features of the Accrual Engine in SAP S/4HANA? Note: There are 2 correct answers to this questions.

- A. All accrual calculations must be reviewed and approved before posting.
- B. Accrual postings with a maximum of two line items are supported.
- C. All currencies of the general ledger are supported.
- D. The fiscal year variant of the general ledger is supported.

Answer: C,D

3.You post a purchase order.

For which expenses does the system calculate accruals? Note: There are 2 correct answers to this questions.

- A. Consulting Services
- B. Insurance premiums
- C. Fixed asset purchases
- D. Raw material purchases

Answer: A,B

4.Which field can you change on a posted invoice?

- A. Baseline date
- B. Tax code
- C. Special G/L indicator
- D. Statistical internal order

Answer: A

5.You have been asked to set up house banks as part of the implementation.

What information do you need? Note: There are 3 correct answers to these questions.

- A. Company code
- B. Payment method
- C. Bank master data
- D. Bank control key
- E. General ledger account

Answer: A,C,E