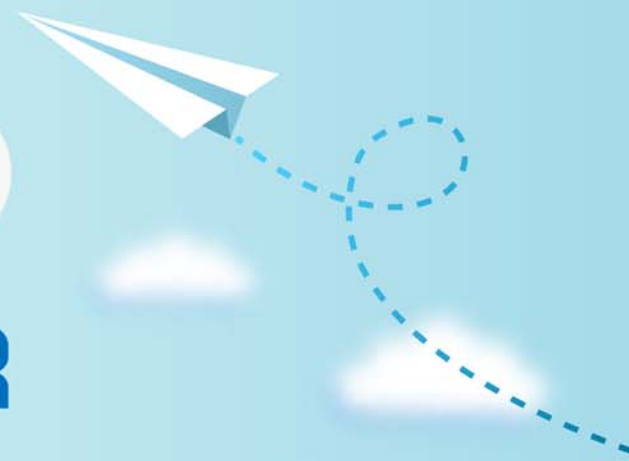


CERTPARK

QUESTION & ANSWER



CERTPARK.COM

Accurate Study Guides,
High Passing Rate!
provides update
free of charge
in one year!



<https://www.certpark.com>

Exam : **C_TSCM42_67**

Title : SAP Certified Application
Associate – Production
Planning & Manufacturing
with SAP ERP 6.0

Version : DEMO

1.You select the master data for production orders via production versions.

Which information is contained in a production version?

- A. The explosion dates for the routing and BOM
- B. The routing and BOM alternatives to be used
- C. The default order type to be used
- D. The control parameters for selecting routings and BOM

Answer: B

2.The master data for an in-house production process is to be set up in the SAP ECC system. To do this, you should create a suitable routing that plans for five operations in an initial sequence (10, 20, 30, 40, 50). There should be an option of relocating operations 30 and 40 to a second sequence on other work centers if there are capacity bottlenecks.

What sequence type would you use to create the second sequence in the system?

- A. Substitute sequence
- B. Alternative sequence
- C. Parallel sequence
- D. Standard sequence

Answer: B

3.Which functions can be triggered before releasing a production order? (Choose three)

- A. Selection of a routing
- B. Selection of a BOM
- C. Stock determination
- D. Confirmation
- E. Scheduling

Answer: A,B,E

4.You use a planning time fence and fixing type 1. You receive a customer order with a material availability date within the planning time fence.

What do you have to consider in this scenario?

- A. Requirements planning considers only changes that are relevant for scheduling within the planning time fence.
- B. Planned orders are created within the planning time fence and automatically firmed by requirements planning.
- C. The MRP controller cannot create planned orders within the planning time fence.
- D. Planned orders that are created by requirements planning are shifted to the end of the planning time fence.

Answer: D

5.Where can you define the default storage location for the material component of a production order? (Choose three)

- A. Routing
- B. Production supply area of a work center
- C. BOM header (product)

D. Production version (product)

E. Material master (component)

Answer: B,D,E