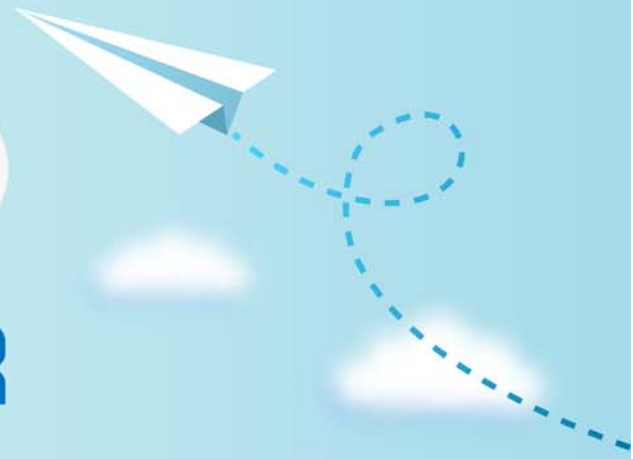


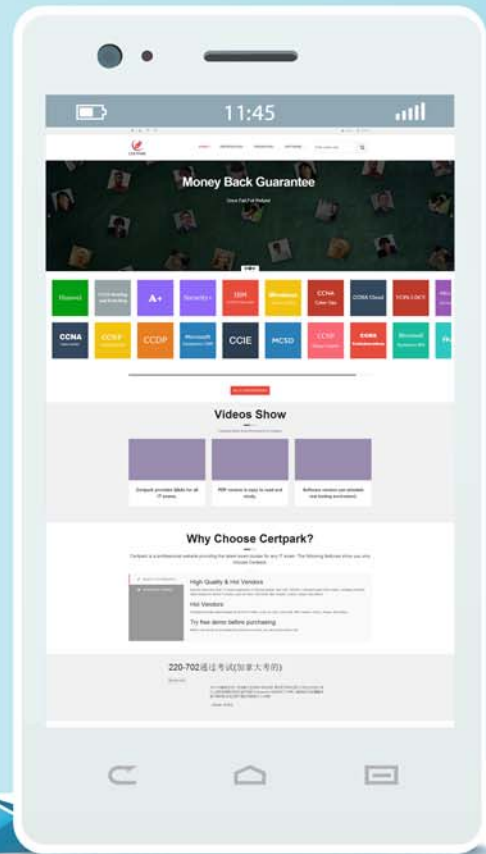
CERTPARK

QUESTION & ANSWER



CERTPARK.COM

Accurate Study Guides,
High Passing Rate!
provides update
free of charge
in one year!



Exam : **D-DP-FN-23**

Title : Dell Data Protection and
Management Foundations
2023

Version : DEMO

1.What is true of hot-swappable hardware?

- A. All components need to be rearranged after swap
- B. Reboot is required after a change
- C. All fans need to be running to ensure proper cooling
- D. Replaceable with zero downtime

Answer: D

2.In which technique does an application maintain limited functionality, even when some of the modules or supporting services of that application become unavailable?

- A. Retry logic
- B. Persistent state model
- C. Graceful degradation
- D. Checkpointing

Answer: C

3.What is a disadvantage of source-based deduplication?

- A. Requires more network bandwidth to send data across LAN or WAN during the backup
- B. CPU cycles may impact application performance
- C. High network load since the client checks all segments on the deduplication server device
- D. Increases CPU utilization in the backup appliance

Answer: B

4.A customer has created a change management window to perform scheduled system maintenance. During the scheduled downtime window, information will be transferred to another system to ensure continuous availability.

What is this process an example of?

- A. Data governance
- B. Data migration
- C. Automated failback
- D. Disaster recovery

Answer: A

5.Which architectural component scans and archives files?

- A. Archive storage
- B. Archive server
- C. Primary storage
- D. Archiving agent

Answer: D