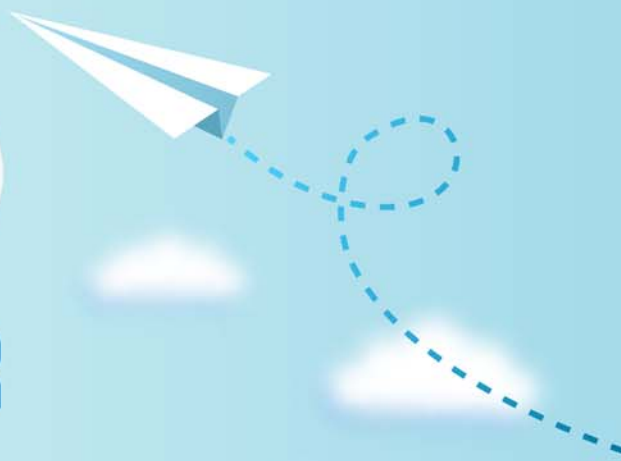


# CERTPARK



## QUESTION & ANSWER



CERTPARK.COM

Accurate Study Guides,  
High Passing Rate!  
provides update  
free of charge  
in one year!



**Exam** : **D-PCM-DY-23**

**Title** : **Dell PowerSwitch Campus  
Deploy 2023**

**Version** : **DEMO**

1.Which technology is designed to protect against a default gateway failure and downtime in the Dell PowerSwitch N-Series switches?

- A. CARP
- B. VRRP
- C. MLAG
- D. HSRP

**Answer: B**

2.A network administrator is having trouble successfully upgrading the firmware on a Dell EMC N-Series switch.

Which transfer protocol should be the last option if all others are not responding?

- A. FTP
- B. HTTP
- C. XMODEM
- D. TFTP

**Answer: C**

3.A network administrator is setting up a Class 5 powered device in their network.

Which Dell EMC N-Serves switch model(s) will support this device?

- A. N1100P and N2000P
- B. N1500P
- C. N2000 and N3000P
- D. N3000P only

**Answer: C**

4.A Dell EMC N3048P with two power supplies is configured for Class-Based Power Management.

The switch has the following devices connected and fully operational:

10x 802.3af PDs negotiating as Class0 devices

10x 802.3af PDs negotiating as Class4 devices

10x 802.3at PDs negotiating as Class4 devices

How much power is reserved from the PSE budget by the devices referenced above?

- A. 462 Watts
- B. 650 Watts
- C. 838 Watts
- D. 1026 Watts

**Answer: D**

5.To which destination MAC address are MLAG peer-keepalive packets sent?

- A. 01:00:B5:00:00:00
- B. 01:00:C5:00:00:00
- C. B5:00:01:00:00:00
- D. C5:00:01:00:00:00

**Answer: A**

