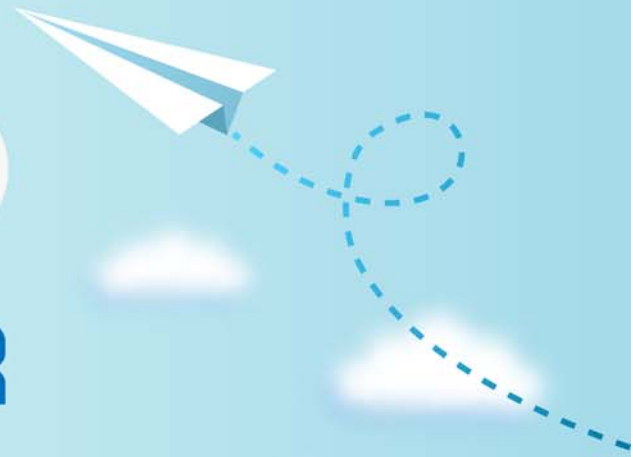


# CERTPARK

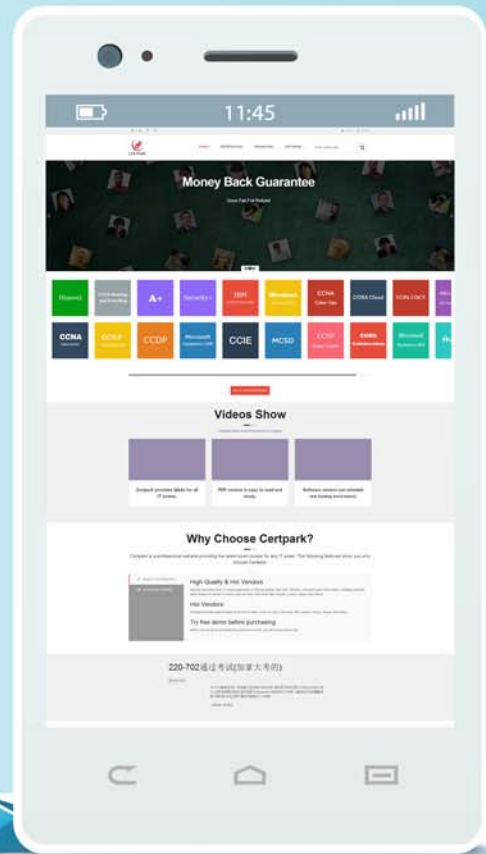


## QUESTION & ANSWER



CERTPARK.COM

Accurate Study Guides,  
High Passing Rate!  
provides update  
free of charge  
in one year!



<https://www.certpark.com>

**Exam** : **D-VXR-DY-01**

**Title** : **Dell VxRail Deploy Exam**

**Version** : **DEMO**

1.Which two files are used to automate VxRail deployment and validate the network configuration?

A. Appliance JSON file

PEQ data file

B. Appliance JSON file

SPEQ

C. VxRail Test Plan

SPEQ

D. VxRail Configuration Portal

PEQ data file

**Answer: A**

2.An implementation engineer is tasked with setting up RecoverPoint for VMs on a 5-node V570F cluster. How many VMs are licensed to be protected on the cluster?

A. 5

B. 15

C. 25

D. 30

**Answer: C**

3.What is a consideration when using ToR switches with VxRail?

A. IPv6 Multicast must be disabled in this environment.

B. Link aggregation must be enabled on VxRail switch ports.

C. VxRail iDRAC Management ports require 10 GbE ports.

D. All-Flash models must use 10 GbE or faster ports.

**Answer: D**

4.When using VxRail Manager, what is the source of information that can help validate good VxRail system post-deployment status?

A. Last Heartbeat, Last Configuration Sent, Network Environment Settings, Cluster Monitor

B. System Diagnostic, Events, Health Logical View, Health Physical View, Log Bundle

C. MARVIN-Virtual-SAN-Cluster > Manage > Health and Performance

D. MARVIN-Virtual-SAN-Cluster > Monitor > Virtual SAN > Health

**Answer: B**

5.An implementation engineer is configuring the network firewall to support a VxRail installation.

Where can they find the necessary firewall rules?

A. Network Validation Tool

B. VxRail Configuration Portal

C. As-Built Configuration Report

D. Rack worksheet of the Network PEQ

**Answer: C**