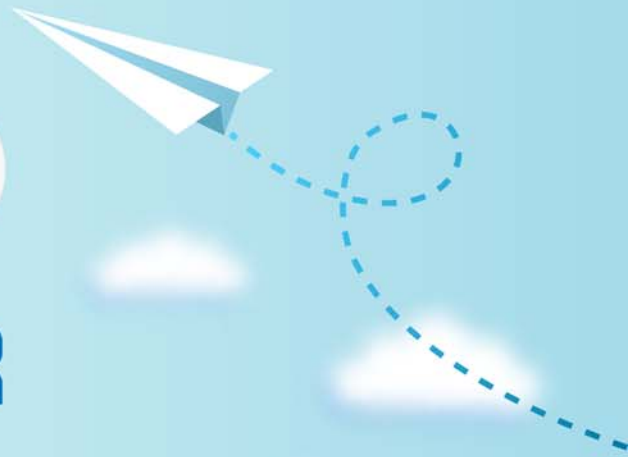


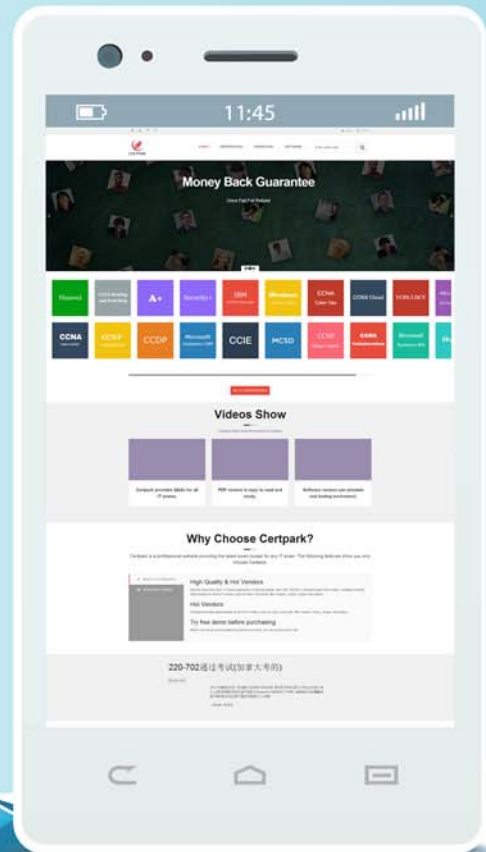
CERTPARK

QUESTION & ANSWER



CERTPARK.COM

Accurate Study Guides,
High Passing Rate!
provides update
free of charge
in one year!



Exam : **DCAN-100**

Title : Dell Networking Associate
Exam

Version : DEMO

1.A customer is using the following subnets in their environment:

Desktops 192.168.1.0/24

Servers192.168.2.0/24

Printers 192.168.7.0/24

DMZ 172.16.10.0/24

The customer has run out of IP space in their desktop subnet. More IPs for desktops must be provided with the least disruptive change to the environment.

Which desktop subnet meets the requirements?

A. 192.168.6.0/24

B. 192.168.2.0/23

C. 192.168.4.0/23

D. 192.168.0.0/23

Answer: D

2.Which of the following is the IPv6 loopback?

A. 1: :/128

B. : :0/128

C. : :1/128

D. 1::1/0

Answer: C

3.A technician needs to create multiple subnets to make sure there are at least 20 available IP addresses per subnet.

Which three subnets meet the requirements for the 172.21.254.0/25 network. (Choose three.)

A. 172.21.254.48/27

B. 172.21.254.0/27

C. 172.21.254.96/27

D. 172.21.254.16/27

E. 172.21.254.64/27

F. 172.21.254.98/27

Answer: B,C,E

4.A technician is applying a switch configuration to an N-Series switch to provide Internet access to all connected subnets. The technician has connected a computer and assigned it an IP address, subnet mask, DNS, and gateway address. The technician is unable to browse the Internet from that computer. What is causing the issue?

A. DHCP Snooping has blocked the host.

B. The static routes in the configuration file are incorrect.

C. The "ip helper-address" command is configured on the switch.

D. Spanning Tree blocked the port going to the PC.

Answer: B

5.A technician configures RIP on a new N-Series switch to connect to an existing switch that runs RIP. The routing table is not populating even after the network statements are added.

What is a possible cause of this issue?

- A. The existing switch has not been configured with the command "hostroutesaccept".
- B. The new switch's interface is in the wrong subnet to form a RIP relationship.
- C. The "ip helper-address" command has not been configured on the existing switch.
- D. The other switch is not a root bridge and cannot form an RIP relationship.

Answer: B