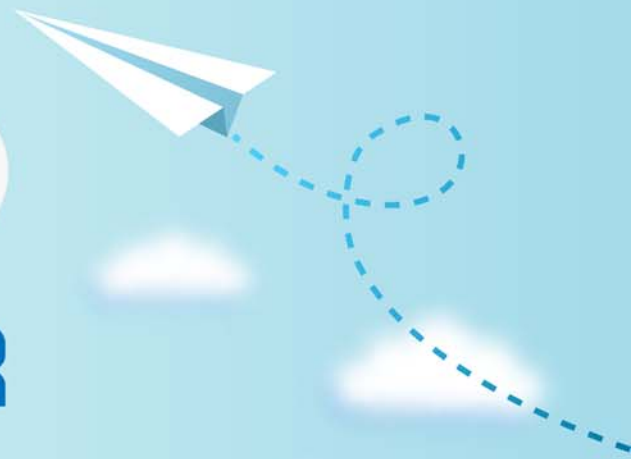


# CERTPARK



## QUESTION & ANSWER



CERTPARK.COM

Accurate Study Guides,  
High Passing Rate!  
provides update  
free of charge  
in one year!



**Exam:**           **DES-1121**

**Title:**           Specialist - Implementation  
Engineer PowerMax and  
VMAX Family Solutions  
Version 1.0

**Version:**       **DEMO**

1. In Unisphere which role has limited privileges that can only view the information about a storage array and is unable to make any configuration changes?

- A. None
- B. Monitor
- C. StorageAdmin
- D. Auditor

**Answer: B**

2. Which product(s) support(s) only 7+1 in RAID 5 configurations?

- A. VMAX3
- B. VMAX All Flash and PowerMax 8000
- C. VMAX All Flash and PowerMax 2000
- D. VMAX All Flash

**Answer: D**

3. A systems administrator plans to use Non-Disruptive Migration (NDM) to migrate data from a VMAX array running Enginuity 5876 to a PowerMax running PowerMaxOS 5978.

Which NDM mode will be used?

- A. Metro-based
- B. Adaptive Copy
- C. Asynchronous
- D. Pass-through

**Answer: B**

**Explanation:**

<https://www.delltechnologies.com/asset/en-us/products/storage/technical-support/h17133-non-disruptive-migration-best-practices-and-operational-guide.pdf>

4. What does a service level define\*?

- A. Expected average throughput for a Storage Group
- B. Expected average response time target for a Storage Group
- C. Expected average response time target for a disk group
- D. Expected average throughput for a disk group

**Answer: B**

5. Where are the Host I/Os directed to when the Storage Group is in a Non-Disruptive Migration CutoverReady state?

- A. Source array only
- B. Held in host cache
- C. Source and target arrays
- D. Target array only

**Answer: D**