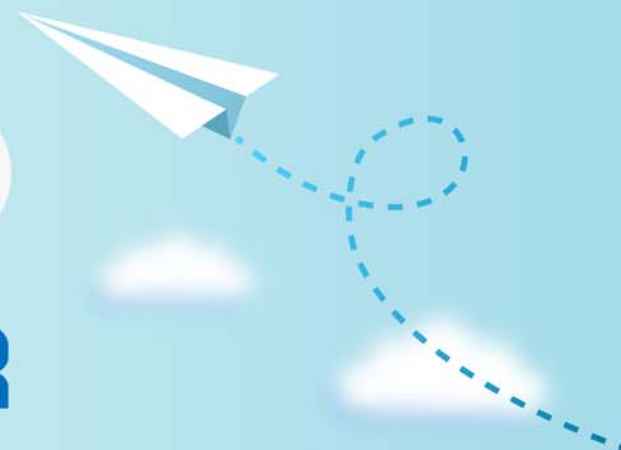


CERTPARK

QUESTION & ANSWER



CERTPARK.COM

Accurate Study Guides,
High Passing Rate!
provides update
free of charge
in one year!



Exam : **E20-405**

Title : EMC Content Management
Server
Programming(CMSP)

Version : Demo

1. Which statement is true about the object model?

- A. dmr_content is not a sub-type of dm_sysobject although sysobject contents are stored as dmr_content objects.
- B. dm_acl objects are stored in the System cabinet.
- C. Not all sysobjects can have associated permissions.
- D. Virtual documents are objects of type dm_relation that describe a parent/child relationship between objects.

Answer: A

2. How do you manually configure the DFC global registry?

- A. 1.add the dfc.bof.registry entries to the dfc.properties file.
- B. 1.encrypt the password
 - 2. add the dfc.bof.registry entries to the dfc.properties file.
- C. 1.activate the registry user
 - 2. change the password
 - 3. encrypt the password
 - 4. add the dfc.bof.registry entries to the dfc.properties file.
- D. 1.create a new user as a consumer
 - 2. designate the user as a registry user
 - 3. encrypt the password
 - 4. add the dfc.bof.registry entries to the dfc.properties file.

Answer: C

3. You have a working registered table called "CompanyList" with one string column called "CompanyName" with one row value "EMC."

What is the output of the following statements?

```
IDfPersistentObject pObj = session.getObjectByQualification("dm_registered where  
object_name='CompanyList');
```

```
System.out.println(pObj.getString("CompanyName"));
```

- A. null
- B. EMC
- C. CompanyName
- D. A DfException is thrown.

Answer: D

4. Which statement is true?

- A. You use the IDfClient.getQuery method to obtain an IDfQuery object.
- B. The execute method of an IDfQuery object returns an IDfCollection.
- C. The execute method of an IDfQuery object returns an IDfEnumeration.
- D. The execute method of an IDfQuery object only requires the repository name as a parameter.

Answer: B

5. Which code should you use to create a copy of the current object and place it in CopyCab?

- A.

```
IDfSysObject sysObj = (IDfSysObject)session.getObject(myId);  
sysObj.link("/CopyCab");  
sysObj.savelock();
```
- B.

```
IDfSysObject sysObj = (IDfSysObject)session.getObject(myId);  
sysObj.unlink("/SourceCab");  
sysObj.link("/CopyCab");  
sysObj.saveAsNew( false );
```
- C.

```
IDfSysObject sysObj = (IDfSysObject)session.newObject(myId);  
sysObj.link("/CopyCab");  
sysObj.save();
```
- D.

```
IDfSysObject sysObj = (IDfSysObject)session.getObject(myId);  
sysObj.unlink("/SourceCab");  
sysObj.link("/CopyCab");  
sysObj.save();
```

Answer: B

6. When are the binding rules for a virtual document actually applied?

- A. When the virtual document is saved
- B. When IDfSysObject.asVirtualDocument() is called
- C. When IDfVirtualDocumentNode.getChildCount() is called
- D. When IDfVirtualDocument.getRootNode() is called

Answer: C

7. Which statement is true?

- A. IDfSession.getLoginTicket() will return a ticket from the current session.
- B. IDfSession.getLoginTicket() will return a new session object for the current user.
- C. IDfSession.getLoginTicket() will return a new session object for the super user.
- D. IDfSession.getLoginTicket() will return a ticket from a new session.

Answer: A

8. Which DFC interface provides a getCheckoutDirectory() method that returns the local checkout directory?

- A. IDfClient
- B. IDfClientX
- C. IDfSession
- D. IDfClientRegistry

Answer: D

9. Which statement is true about Trusted Content Services (TCS)?

- A. TCS is not required to create ApplicationPermission entries.
- B. TCS is not required to evaluate ApplicationPermission entries.
- C. TCS is not required to delete ApplicationPermission entries.
- D. TCS validates and enforces application permissions at the server level.

Answer: B

10. Where are the credentials located for the BOF's client dynamic delivery mechanism?

- A. dfc.properties
- B. dmcl.ini
- C. bof.properties
- D. dbor.properties

Answer: A

11. Which SBO method signature is valid for conversion to a web service?

- A. void setKeyword(IDfSysObject obj, int index, String value)
- B. boolean uploadConfiguration(java.io.File myFile)
- C. boolean setKeyword(IDfSysObject obj, int index, String value)
- D. int countDocuments(IDfSession sess, String qualification)

Answer: B

12. What happens when you fail to close open query collections in a DFC application?

- A. Performance for other users will be impaired.
- B. Eventually, no more queries can be executed.
- C. Garbage collection will release appropriate resources.
- D. The session will disconnect.

Answer: B

13. What kind of module is used to create a Documentum Web Service?

- A. Type-based Business Object
- B. Service-based Business Object
- C. Web-based Business Object
- D. Custom Module

Answer: B

14. Given the following repositories that are projecting to the following Connection Brokers:

Docbase A -> host1

Docbase B -> host2

dmcl.ini:

```
[DOCBROKER_PRIMARY]
```

```
host = host1
```

```
port = 1489
```

How do you dynamically add host2 as additional Connection Broker, such that Docbase A and Docbase B are listed as available repositories?

- A. change "host = host1" to "host = host1, host2" in dmcl.ini
- B. execute `IdfDocbrokerClient.addDocbroker("host2",1489);`
- C. add the following statements in the dmcl.ini: `[DOCBROKER_BACKUP_1] host=host2 port=1489`
- D. add the following statements in the dmcl.ini: `[DOCBROKER_SECONDARY] host=host2 port=1489`

Answer: B

15. Given the following architecture:

server1 - content server and java method server

app1 - application server running Webtop

local1 - client computer

To disable full-text search for end users of Webtop, on which computer should you update the dfc.properties file?

- A. server1 only
- B. app1 only
- C. both server1 and local1
- D. both app1 and local1

Answer: B

16. A TBO has been created for the custom object type called my_loan_application. If the following

statement is executed in a Webtop custom component, where is the TBO executed?

```
IDfSysObject loanApp = (IDfSysObject)session.newObject("my_loan_application");
```

- A. The TBO executes on the client browser's JVM.
- B. The TBO executes on the Global Registry computer.
- C. The TBO executes on the application server JVM.
- D. The TBO executes on the Content Server JVM.

Answer: C

17. How should you deploy a TBO to the repository?

- A. Using IDfClient.newModule() only
- B. Using Documentum Application Installer only
- C. Using both Documentum Application Installer and IDfClient.newModule()
- D. Using Documentum Application Installer, IDfClient.newModule() and IDfClient.newService()

Answer: B

18. What are the minimum required components to extend custom object type behavior?

- A. TBO and SBO
- B. TBO and DFC
- C. SBO and DFC
- D. SBO and Web Services Framework

Answer: B

19. A TBO has been created for a custom object type called my_loan_application. The TBO relies on a dependant SBO to calculate credit scores. The TBO is only invoked by the Webtop application.

Where does the SBO execute?

- A. Global registry machine
- B. Content Server JVM
- C. Application Server JVM
- D. the client browser's JVM

Answer: C

20. Given an SBO called com.mycompany.ICreditScore and the following statement:

```
newModule(repositoryName, "com.mycompany.ICreditScore", sessionMgr)
```

What does the statement do?

- A. deploys com.mycompany.ICreditScore module
- B. deploys com.mycompany.ICreditScore service
- C. deploys and instantiates com.mycompany.ICreditScore module
- D. deploys and instantiates com.mycompany.ICreditScore service

Answer: C

21. Which statement is true about Documentum Web Services Framework (WSF)?

- A. All business objects can be exposed as Services using WSF.
- B. Currently WSF does not support secured SOAP transfer.
- C. WSF does not require UDDI to discover Web services.
- D. Currently WSF only supports J2EE clients.

Answer: C

22. Which statement is true about Connection Brokers?

- A. A Connection Broker is not required in order to establish a session between DFC application and Content Server.
- B. To perform IP translation through a firewall, you need to have two Connection Brokers.
- C. Load balancing across Connection Brokers is not natively supported.
- D. When you shut down a Content Server, it automatically shuts down its primary Connection Broker.

Answer: A

23. Given the following repositories that are projecting to the following Connection Brokers:

Docbase A -> host1 and host3

Docbase B -> host1 and host2

Docbase C -> host1, host2, and host3

And given the following code:

```
IDfDocbaseMap myMap = client.getDocbaseMap();
for(int i = 0; i < myMap.getDocbaseCount(); i++) {
    System.out.println(myMap.getDocbaseName(i));
}
```

What is the output for the code, assuming you are using a session established to Docbase C from host2?

- A. null
- B. Docbase C
- C. Docbase B Docbase C
- D. Docbase A Docbase B Docbase C

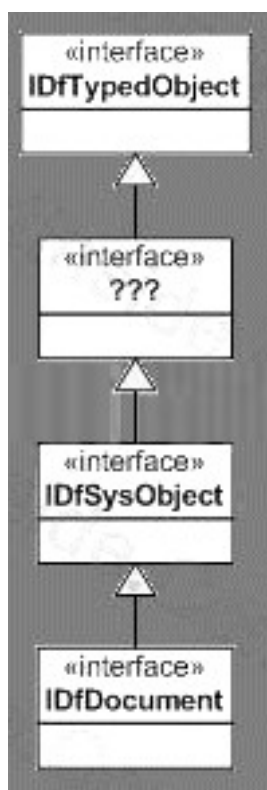
Answer: C

24. Which is NOT a valid interface?

- A. IDfCabinet
- B. IDfFolder
- C. IDfDocument
- D. IDfGroup

Answer: A

25. Click the <Exhibit> button.



Which interface is missing in the diagram?

- A. IDfFolder
- B. IDfCabinet
- C. IDfPersistentObject
- D. IDfNonPersistentObject

Answer: C

26. How can you provide an interface for a custom object type that gets instantiated using DFC methods such as getObject()?

- A. extend IDfDocument
- B. extend IDfSysObject
- C. create a TBO with an interface for the custom object type
- D. create an SBO with an interface for the custom object type

Answer: C

27. Which interface can be used when creating repository objects that have content?

- A. IDfTypedObject

- B. IDfDocument
- C. IDfPersistentObject
- D. IDfContentObject

Answer: B

28. Which interface declares the save()method?

- A. IDfSysObject
- B. IDfTypedObject
- C. IDfDocument
- D. IDfPersistentObject

Answer: D

29. A custom object type called my_loan_application is created with a custom repeating attribute called borrower_names. The data type of the attribute is String.

Which interface declares a method to update borrower_names?

- A. IDfTypedObject
- B. IDfType
- C. IDfValueAssistance
- D. IDfCustomObject

Answer: A

30. What is the correct hierarchy in the Documentum object model?

- A. dm_folder inherits from dm_cabinet, which inherits from dm_sysobject.
- B. dm_sysobject inherits from dm_document.
- C. dm_document inherits from dm_folder, which inherits from dm_sysobject.
- D. dm_category inherits from dm_folder, which inherits from dm_sysobject.

Answer: D