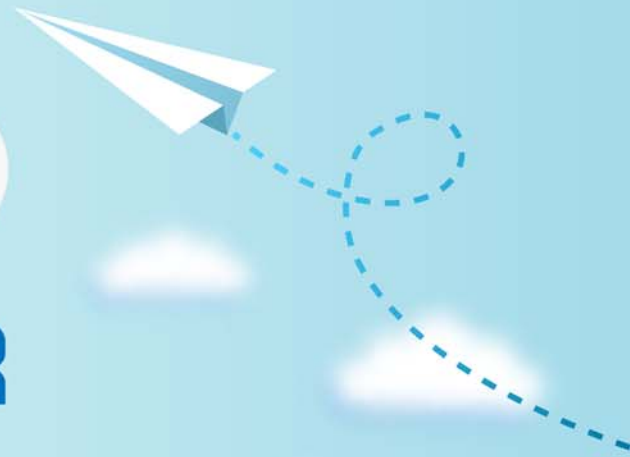


CERTPARK



QUESTION & ANSWER



CERTPARK.COM

Accurate Study Guides,
High Passing Rate!
provides update
free of charge
in one year!



<https://www.certpark.com>

Exam : **EADA10**

Title : ArcGIS Desktop Associate

Version : DEMO

1.Which two spatial query operators will select point features that are surrounded by polygon features?
(Select two)

- A. Completely Contain
- B. Are Completely Within
- C. Share a Line Segment With
- D. Intersect
- E. Touch the Boundary Of

Answer: A,D

2.Which limit is set for file geodatabase name length for ArcGIS Desktop.?

- A. no limit
- B. limited to 32 characters
- C. limited to 255 characters
- D. limited to the number of characters the operating system allows in a folder name

Answer: C

3.Which tool from the ArcGIS System toolbox allows the option to create a schema-only layer package (lpk) in ArcGIS Desktop?

- A. Package Layer
- B. Export Replica Schema
- C. Package Map
- D. Create Schematic Folder

Answer: A

4.An ArcGIS user is analyzing an earthquake dataset to investigate the relationship between magnitude and duration of incidents. The user displays magnitude on an x-axis and duration on a y-axis.

Which type of graph is the user employing?

- A. box plot
- B. histogram
- C. scatter plot
- D. bar

Answer: A

5.An ArcGIS user is required to create a new feature class output of rivers of California Currently, the user has a feature class of the USA rivers and a feature class of the California state boundary.

Which process would generate the necessary output?

- A. Union tool with the USA rivers and California state boundary selected for input features
- B. Clip tool with the USA rivers as input features and California state boundary as clip features
- C. Union tool with the USA rivers as input and California state boundary as output feature class
- D. Clip tool with the California state boundary as input features and USA rivers as clip features

Answer: B

6.An ArcGIS user creates a locator from a polyline feature class that exists in a feature dataset.

Where can the locator be saved?

- A. in a feature dataset
- B. in a Windows folder
- C. in a topology dataset
- D. in a feature class

Answer: D

7.The ArcGIS user works with a map document that contains a very detailed image that takes several seconds to draw when panning.

Which action can the ArcGIS user take that will improve the performance when panning in ArcMap?

- A. put the image layer in a group layer
- B. set the reference scale on the image layer
- C. put the image layer in a basemap layer
- D. make the image layer selectable

Answer: D

8.An ArcGIS user has two feature classes. One is spatially inaccurate but contains accurate tabular data, the other is spatially accurate but contains inaccurate tabular data. The ArcGIS user needs a single feature class that is spatially and tabularly accurate

Which tool should the ArcGIS user employ to accomplish this?

- A. Join Field
- B. Attribute Transfer
- C. Copy Features
- D. Load Data

Answer: A

9.When is a transformation required while projecting data?

- A. when the input data source is a network
- B. when the input and output geographic coordinate systems are different
- C. when the input and output spatial references are different
- D. when the input feature class has an unknown spatial reference

Answer: B

10.An ArcGIS user is working within a map document and has realized that the Table of Contents is no longer available. Which menu must the user choose to add the Table of Contents to his map document?

- A. Insert menu
- B. View menu
- C. Edit menu
- D. Windows menu
- E. Add menu

Answer: D