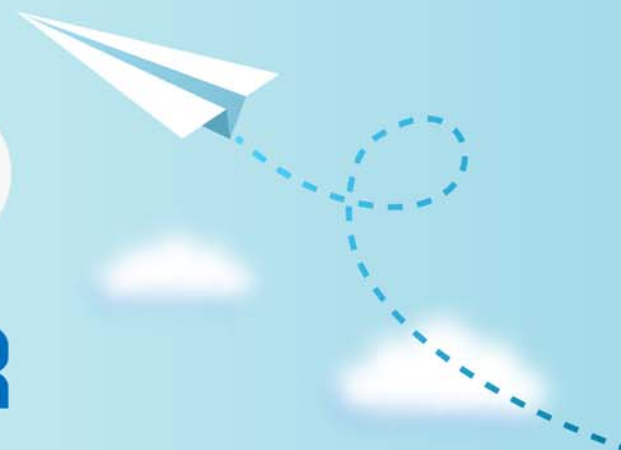


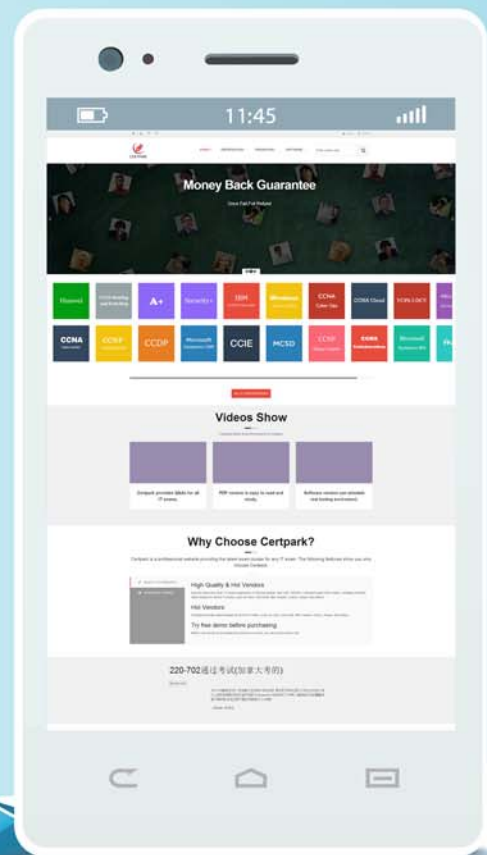
CERTPARK

QUESTION & ANSWER



CERTPARK.COM

Accurate Study Guides,
High Passing Rate!
provides update
free of charge
in one year!



Exam : **E_BW4HANA207**

Title : SAP Certified Application
Specialist - SAP BW/4HANA
2.0 Delta

Version : DEMO

1. Which steps are required to set up a real-time data streaming process based on the "SAP HANA Smart Data Access (HANA_SDA)" source system in SAP BW/4HANA? Note: There are 3 correct answers to this question.

- A. Set up an Open ODS view based on the SAP HANA remote source and associate InfoObjects to U each field
- B. Create a CompositeProvider on top of the DataStore object (advanced) and define a BW Query on top of it.
- C. Create a DataStore object (advanced) and a Transformation including DTP connecting the BW DataSource
- D. Create an SAP HANA remote source based on an SAP HANA Smart Data Integration adapter and a 1-1 BW DataSource related to it.
- E. Create a Process Chain that executes the DTP, set it to "Streaming mode", and schedule it.

Answer: A,C,D

2. From an SAP BW/4HANA perspective, what is the difference between SAP HANA Smart Data Access (SDA) and SAP HANA Smart Data Integration (SDI)? Note: There are 2 correct answers to this question.

- A. SDI provides options for data replication in real-time, while SDA does NOT provide this capability.
- B. SDA integrates into the SAP HANA Indexserver while you need to setup an additional SAP 1-1 HANA Data Provisioning server for SDI
- C. SAP BW/4HANA DataSources of source system type "SAP HANA" can connect to SDA sources, U but NOT to SDI sources.
- D. SAP BW/4HANA Open ODS View can be modelled on SDI sources, but NOT on SDA sources.

Answer: B,D

3. You create a DataStore object (advanced) with only the setting "Straging DataStore Object" and "Reporting-Enabled" selected.

Which table or combination of tables is used when data is extracted from this DataStore object (advanced) in a data flow?

- A. The union of the Inbound table and the Changelog table
- B. The union of the Inbound table and the Active Data table
- C. Inbound table only
- D. Active Data table only

Answer: D

4. You use an Open Hub Destination to distribute SAP BW/4HANA data to a table managed by an SAP database.

Which technologies can be used? Note: There are 2 correct answers to this question.

- A. Operational Data Provisioning (ODP)
- B. Database Connection (DBCON)
- C. Smart Data Access (SDA)
- D. Remote Function Call (RFC)

Answer: C,D

5. Which operations can you perform in the SAP BW/4HANA Cockpit? Note: there are 3 correct answers to this question.

- A. Monitor Process Chains
- B. Manage requests of DataStore objects (advanced)
- C. Create and maintain BW Query variables
- D. Create and maintain indices for DataStore objects (advanced)
- E. Create and maintain Analysis Authorizations

Answer: A,B,E