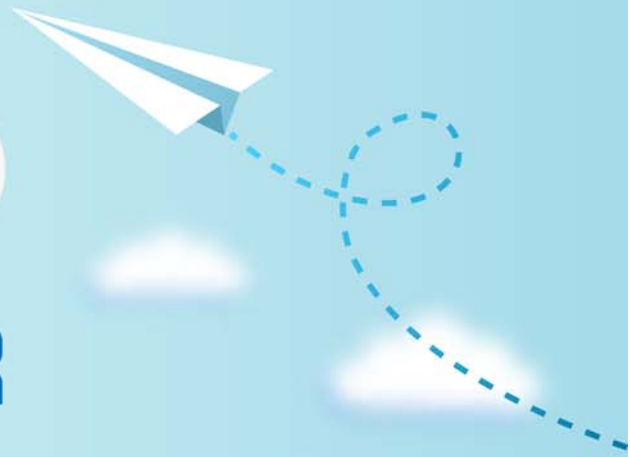


CERTPARK

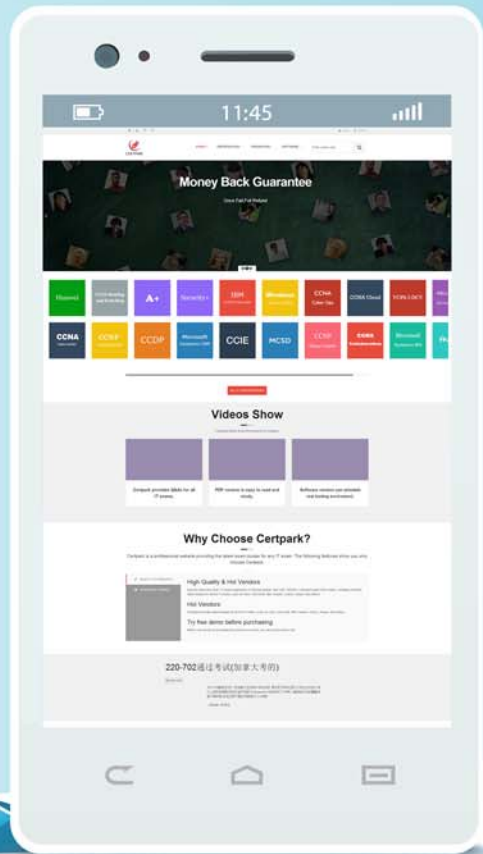


QUESTION & ANSWER



CERTPARK.COM

Accurate Study Guides,
High Passing Rate!
provides update
free of charge
in one year!



<https://www.certpark.com>

Exam : **FortiADC**

Title : **FortiADC 4.4.0 Specialis**

Version : **DEMO**

1.Which of these is a security feature specific to FortiADC global load balancing? (Choose two.)

- A. Virtual tunnel
- B. Web application firewall
- C. DNS forwarding
- D. DNSSEC

Answer: B,D

2.Which settings are included in the global load balancing general DNS settings? (Choose two.)

- A. Management traffic
- B. Default zone configurations
- C. Recursion
- D. Response rate limit

Answer: C,D

3.Which of the following statements best describe what a SYN cookie does when a SYN packet is received?

- A. It replies with a RST packet if the SYN packet doesn't contain the right cookie in the sequence field.
- B. It sends a SYN/ACK with a cookie in the sequence field.
- C. It replies with a SYN/ACK packet containing a cookie value in the TCP acknowledge field.
- D. It replies with two SYN/ACK packets. One containing the right acknowledge value, and one containing a wrong acknowledge value.

Answer: B

4.For the case of outbound link load balancing, which upstream link is elected by the proximity route dynamic detection feature as the best one for a destination IP address?

- A. The link with the lowest round-trip delay to the destination IP address
- B. The link with the lowest number of sessions
- C. The link with the lowest traffic utilization
- D. The link with the lowest number of packets lost

Answer: A

5.An administrator has configured all the back-end servers with a maximum warm-up state rate. Under which conditions is the maximum rate enforced by the FortiADC? (Choose two.)

- A. When the status of a server is set to Enabled from Maintain or Disabled
- B. When multiple health check methods have been configured for a server and some of them are failing but at least one is up
- C. During a warm-up period, when a server is back online after a health check downtime
- D. As long as a server keeps replying to the health check

Answer: C,D