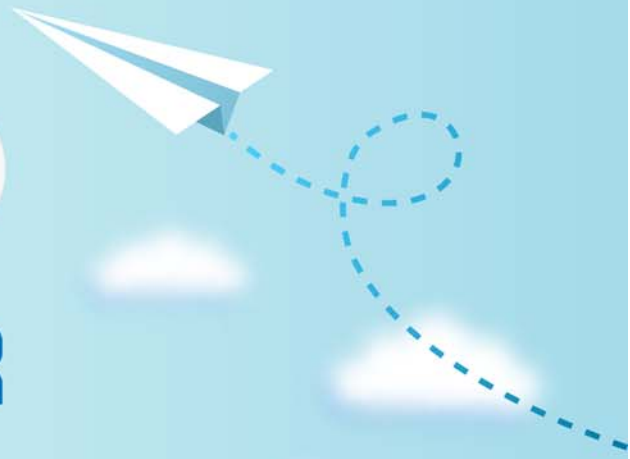


# CERTPARK



## QUESTION & ANSWER



CERTPARK.COM

Accurate Study Guides,  
High Passing Rate!  
provides update  
free of charge  
in one year!



**Exam** : **H13-621-ENU**

**Title** : HCNP-Storage-CUSN(Constructing Unifying Storage Network)

**Version** : DEMO

1.Which of the following options does not belong to the hardware components of IP SAN?

- A.Ethernet connected devices
- B.iSCSI Host bus adapters
- C.Storage Device
- D.initiator Starter

**Answer: D**

2.Which of the sharing manners are Reliability Technology Cluster used in storing data? (Selected 3 answers)

- A.Mirror mode
- B.No sharing
- C.Full-sharing
- D.Manual mode

**Answer: A, B, C**

3.In the multipath environments of iSCSI link, for failover failures, which aspects will be usually diagnosed? (Selected 3 answers)

- A.Confirm the compatibility of open-iscsi and multipath
- B.Check Multipath Service started or not and Multipath module loading
- C.Check Controller Status, especially Peer controller
- D.Check the Parameter configuration of /etc/iscsi.conf document ConnFailTimeout=0

**Answer: A, B, C**

4.In the same case of IO environment and disk type, which of the following description of RAID5/RAID10 Performance Comparison is wrong?

- A.Space utilization: Raid5 is obviously better than Raid10
- B.Security: Raid5 is lower than Raid10
- C.When read the business which belongs to large files, the performance of Raid5 is obviously better than Raid10
- D.When read the business belongs to the Radom small IO, Raid5 is the best choice

**Answer: D**

5.A control box of S5500 configured eight FC 300G and eight SATA 1T hard drives.Five FC 300G hard drives made RAID group 0, Five SATA 1TB hard drives made RAID group 1.Now, want to configure global hot spare disk for storage, in this case, how to configure it?

- A.A FC 300GB disk set to global hot spare disk
- B.A SATA 1TB disk set to global hot spare disk
- C.A FC 300GB disk and a SATA 1TB disk set to global hot spare disk, respectively.
- D.In this configuration, this device cannot configure global hot spare.

**Answer: C**