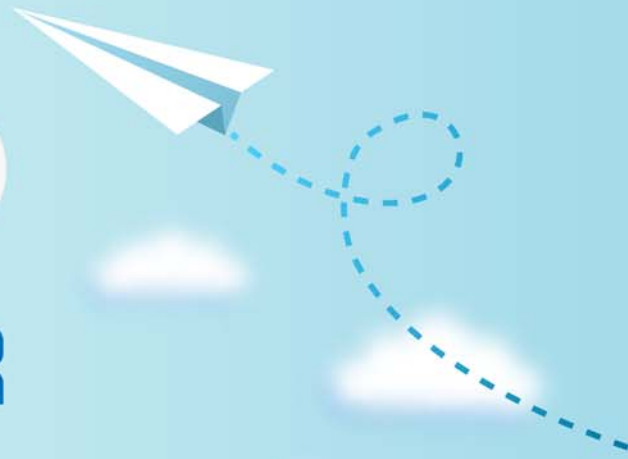


# CERTPARK

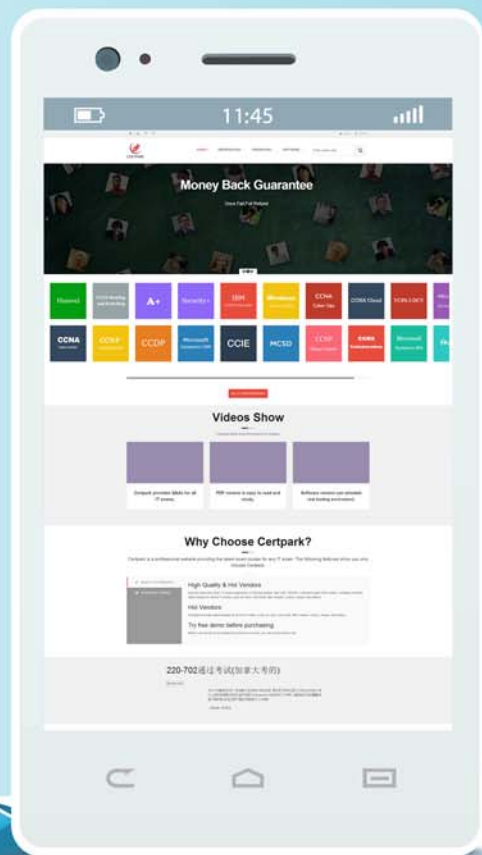


## QUESTION & ANSWER



CERTPARK.COM

Accurate Study Guides,  
High Passing Rate!  
provides update  
free of charge  
in one year!



<https://www.certpark.com>

**Exam** : **HCE-3700**

**Title** : Hitachi Vantara Certified  
Expert – Performance  
architect

**Version** : DEMO

1.What are two appropriate criteria for evaluating a batch job performance? (Choose two.)

- A. elapsed time and/or throughput (MBs, IOPS)
- B. storage response time
- C. customer requirements
- D. host initiators utilization

**Answer:** AB

2.You are evaluating storage system performance for an interactive workload.

What are three appropriate criteria in this situation? (Choose three.)

- A. customer requirements
- B. throughput (MBs)
- C. elapsed time
- D. storage system response time
- E. resource utilization (% busy)

**Answer:** BCD

3.A 10K RPM Small Form Factor 600 GB disk drive has a 3 ms average rotational latency and a 4 ms average seek time.

How many random read IOPS would you expect from a 4D+4D RAID group using these drives before any consideration for cache hits or queuing optimization benefits?

- A. approximately 570 IOPS
- B. approximately 1,140 IOPS
- C. approximately 1,530 IOPS
- D. approximately 2,280 IOPS

**Answer:** D

4.Which two environments are suitable for cost effective use of Hitachi Accelerated Flash disk media?

(Choose two.)

- A. Online Analytical Processing (OLAP) data warehouse
- B. Online Transaction Processing (OLTP) with HDT
- C. large scale Consumer Video on Demand (CVOD)
- D. Virtual Desktop (VDI)

**Answer:** AB

5.How many back-end disk operations are normally required to complete a small block random write operation to a LUN on a RAID 5 group?

- A. 2
- B. 3
- C. 4
- D. 6

**Answer:** C