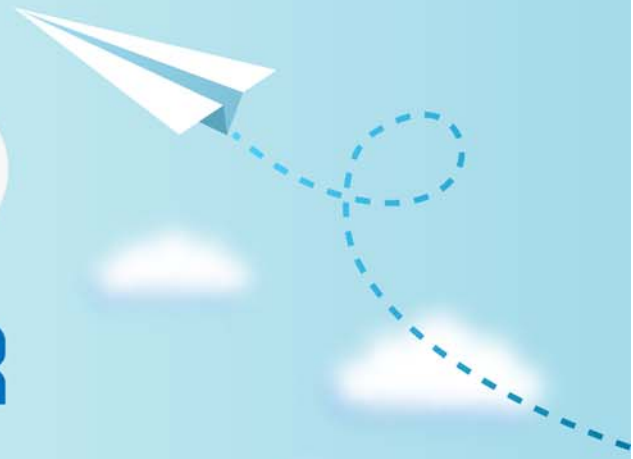


CERTPARK

QUESTION & ANSWER



CERTPARK.COM

Accurate Study Guides,
High Passing Rate!
provides update
free of charge
in one year!



<https://www.certpark.com>

Exam : **HP2-T29**

Title : **Delta - Building HP Server
Solutions**

Version : **Demo**

1.What is a benefit of using an HP custom image for ESXi?

- A. It contains licenses that enable HP OneView for vCenter Server.
- B. It includes all of the required drivers and management software to run ESXi on HP ProLiant servers.
- C. Its enhanced licensing options are available only for HP ESXi images run on ProLiant.
- D. It is the only way to get VMware support on HP ProLiant servers.

Answer: B

Explanation:

Reference: <http://www8.hp.com/us/en/products/servers/solutions.html?compURI=1499005#tab=TAB4>
 C:\Users\Chaudhry\Desktop\1.jpg

2.Your customer needs the ability to remotely power on and power off ProLiant servers.

What is the minimum level of iLO license that supports this requirement?

- A. iLO Essentials
- B. iLO Standard
- C. iLO Advanced
- D. iLO Scale-Out

Answer: B,C

3.What is NVMe?

- A. An updated version of the Versa Module Europa (VME) bus technology
- B. A standard for thin provisioning of virtual machines
- C. An implementation of mirrored non-volatile memory
- D. A bus technology used for accessing Solid State Drives (SSDs)

Answer: D

Explanation:

NVMe and SCSIe performance

NVM Express (NVMe) is a high-performance, scalable host controller interface (Figure 1-9) designed for enterprise, data center, and client systems that use PCIe SSDs. **The NVMe standards-based approach can be adopted across multiple platforms, ensuring interoperability of PCIe SSDs.** With a standardized interface for PCIe SSDs, operating systems need only one driver to work with all SSDs in the system that conform to the standard.

4.Which statement is true regarding Virtual Connect FlexFabric-20/40 F8 Modules'?

- A. Four internal stacking links are provided.
- B. There is no support for full height blades
- C. There is mixed traffic support in paired uplinks.
- D. A maximum of six modules are allowed in a single enclosure.

Answer: D

Explanation:

[Bay 1]	VC FlexFabric-20/40 F8	->	VC FlexFabric-20/40 F8 or Empty	[Bay 2]	FlexFabric Adapter 10/20 LOM
[Bay 3]	VC FlexFabric-20/40 F8	->	VC FlexFabric-20/40 F8 or Empty	[Bay 4]	FlexFabric Adapter 10/20 Mezzanine
[Bay 5]	VC FlexFabric-20/40 F8	->	VC FlexFabric-20/40 F8 or Empty	[Bay 6]	FlexFabric Adapter 10/20 Mezzanine
[Bay 7]	Empty	->	Empty	[Bay 8]	

5. Why would you update HP Intelligent Provisioning on Gen8/Gen9 ProLiant servers'?

- A. to prepare deployment of new operating systems
- B. to update the SA agent used by Insight Control server provisioning
- C. to update microcodes in RBSU/UEFI
- D. to system performance improve the overall

Answer: D

Explanation:

Reference: http://www8.hp.com/us/en/products/servers/proliant-servers.html#tab=TAB5?jumpid=hpr_r1002_usen_link1