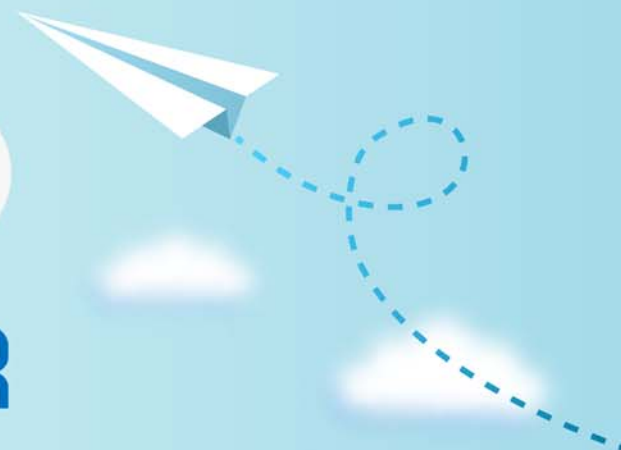


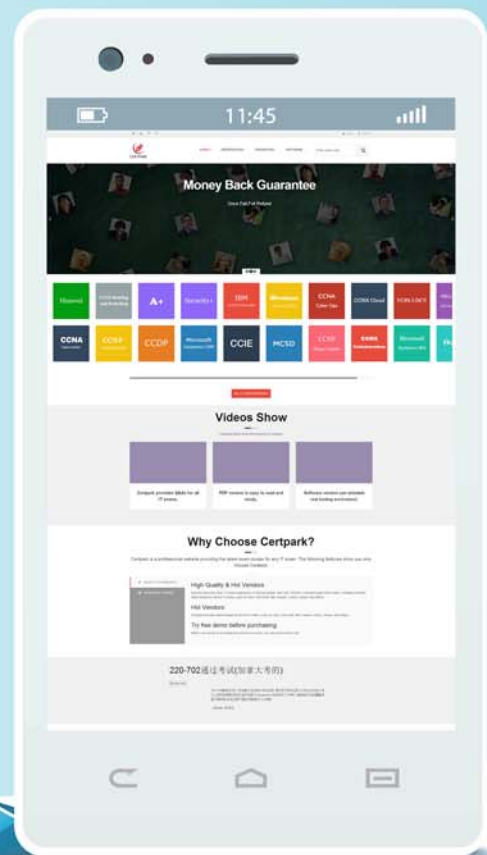
CERTPARK

QUESTION & ANSWER



CERTPARK.COM

Accurate Study Guides,
High Passing Rate!
provides update
free of charge
in one year!



Exam : **JK0-019**

Title : **CompTIA E2C Network +
Certification Exam**

Version : **Demo**

1.A user's laptop is unable to keep a stable network connection.

Which of the following measures would MOST likely need to be configured?

- A. SSID name
- B. WAP encryption strength
- C. WAP radio power
- D. Channel overlay

Answer: C

Explanation:

WAP radio power is the signal strength through which you can specify the range from which you can stay connected to the network and access internet. Here, when the user is not able to maintain a stable connection then it is a problem with the signal strength for sure so you can try to increase the signal strength by increasing the radio power.

2.The Network Interface Layer of the TCP/IP model corresponds to which of the following layers of the OSI model? (Select TWO).

- A. Network
- B. Session
- C. Transport
- D. Physical
- E. Data link

Answer: D,E

Explanation:

The network layer is responsible for packet forwarding including routing through intermediate routers, whereas the data link layer is responsible for media access control, flow control and error checking.

3.In which of the following layers of the OSI model would MAC addressing be found?

- A. Network
- B. Application
- C. Data Link
- D. Transport

Answer: C

Explanation:

The ITU-T G.hn standard, which provides high-speed local area networking over existing wires (power lines, phone lines and coaxial cables), includes a complete data link layer which provides both error correction and flow control by means of a selective repeat Sliding Window Protocol.

4.Several users from the finance department report that they are able to access the Internet, but unable to connect to their financial applications. The network technician is unable to ping the finance server. The technician decides to check the switch and determines that Internet access is working.

Which of the following is a possible cause of the access issues?

- A. Faulty cable
- B. Remote management disabled
- C. Improper VLAN assignment
- D. Mismatched duplex

Answer: C

Explanation:

Finance Server is placed in same VLAN which is assigned to finance users if they are able to access internet that's means connectivity to switch is good, so we have to check the VLAN assigned to users.

5.A technician needs to ensure that traffic from a specific department is separated within several switches. Which of the following needs to be configured on the switch to separate the traffic?

- A. Duplex settings
- B. SNMP string
- C. VLAN assignments
- D. Spanning tree

Answer: C

Explanation:

A VLAN is a group of end stations with a common set of requirements, independent of physical location. VLANs have the same attributes as a physical LAN but allow you to group end stations even if they are not located physically on the same LAN segment.