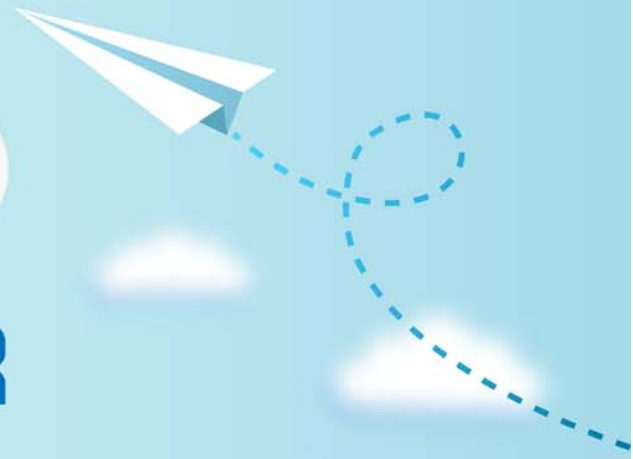


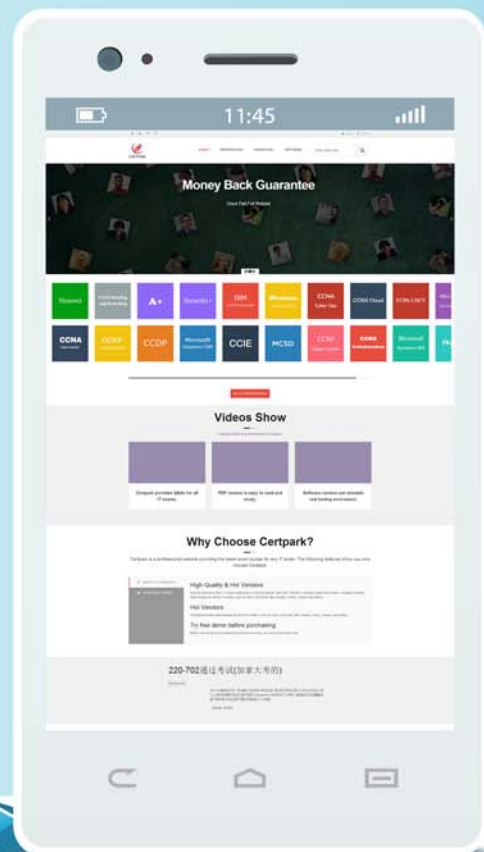
CERTPARK

QUESTION & ANSWER



CERTPARK.COM

Accurate Study Guides,
High Passing Rate!
provides update
free of charge
in one year!



<https://www.certpark.com>

Exam : JN0-102

**Title : Juniper Networks Certified
Internet Associate, Junos
(JNCIA-Junos)**

Version : DEMO

1.The IP address 10.1.1.1 belongs to which class of IP address space?

- A. Class A
- B. Class B
- C. Class C
- D. Class D

Answer: A

2.For the interface ge-1/2/3.4, what does "ge" represent?

- A. SONET/SDH
- B. Gigabit Ethernet
- C. Aggregated Ethernet
- D. GRE

Answer: B

3.Which word starts a command to display the operational status of a Junos device?

- A. put
- B. set
- C. show
- D. get

Answer: C

4.Which command prompt indicates that you are in operational mode?

- A. user@router&
- B. user@router#
- C. user@router%
- D. user@router>

Answer: D

5.What is the decimal equivalent of 00000100?

- A. 2
- B. 4
- C. 9
- D. 12

Answer: B