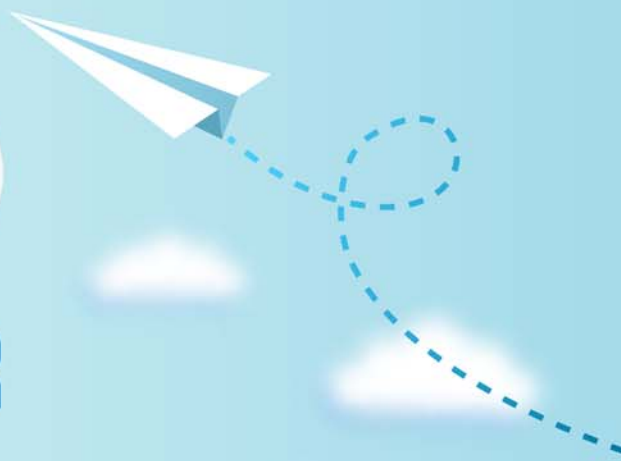


# CERTPARK

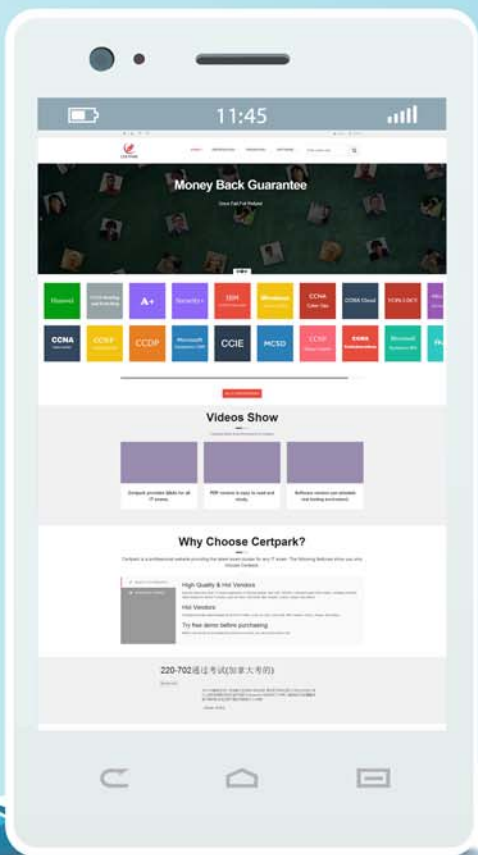


## QUESTION & ANSWER



CERTPARK.COM

Accurate Study Guides,  
High Passing Rate!  
provides update  
free of charge  
in one year!



**Exam** : **JN0-104**

**Title** : Junos, Associate (JNCIA-  
Junos)

**Version** : DEMO

1.You enable unicast reverse path forwarding on the ge-0/0/1.0 interface A packet is received on the ge-0/0/1.0 interface with a source address of 10.10.10.10. A route lookup determines that the next hop for the 10.10.10.10 address is the ge-0/0/1.0 interface. In this scenario which action is performed?

- A. The packet is logged
- B. The packet is forwarded
- C. The packet is rejected
- D. The packet is discarded

**Answer: B**

**Explanation:**

<https://www.juniper.net/documentation/us/en/software/junos/security-services/topics/topic-map/interfaces-configuring-unicast-rpf.html>

2.Referring to the exhibit.

```
[edit protocols ospf]
user@router# edit area 51 stub
[edit protocols ospf area 0.0.0.51 stub]
user@router# exit
```

what happens when you issue the exit command at the [edit protocols ospf area 0.0.0.51 stub] hierarchy level?

- A. You move one level up to the [edit protocols ospf area 0.0.0.51] hierarchy level.
- B. You exit the configuration mode.
- C. You move to the [edit] hierarchy level.
- D. You move to the most recent higher level of the [edit protocols ospf] hierarchy.

**Answer: D**

3.Exhibit:

```
[edit routing-options]
user@router# show
static {
  route 0.0.0.0/0 {
    next-hop 10.1.1.1;
    qualified-next-hop 10.1.1.254 {
      preference 4;
    }
  }
}
```

Assuming both paths shown in the exhibit are available, which statement is correct?

- A. Traffic matching the default route will use 172.16.1.1 as the next hop
- B. Traffic matching the default route will use 172.16.1.254 as the next hop
- C. Traffic matching the default route will be load-balanced per flow across both next hops
- D. Traffic matching the default route will be load-balanced per packet across both next hops.

**Answer: B**

4. Which attribute must be defined when configuring a non-root user in Junos OS?

- A. class
- B. uid
- C. authentication
- D. full-name

**Answer: A**

**Explanation:**

UID is optional (it is automatically set) whereas class is required:

<https://www.juniper.net/documentation/us/en/software/junos/user-access/topics/topic-map/junos-os-user-accounts.html>

5. Your Junos OS routers use a static route to provide connectivity to the management network. You do not want this static route to be redistributed using a dynamic routing protocol.

In this scenario, which static route configuration parameter will accomplish this task?

- A. no-install
- B. no-retain
- C. no-resolve
- D. no-readvertise

**Answer: C**