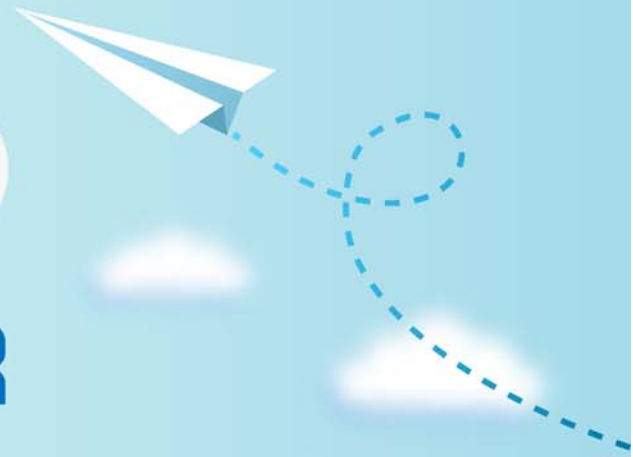


CERTPARK



QUESTION & ANSWER



CERTPARK.COM

Accurate Study Guides,
High Passing Rate!
provides update
free of charge
in one year!



Exam : **JN0-662**

Title : Service Provider Routing
and Switching, Professional
(JNCIP-SP)

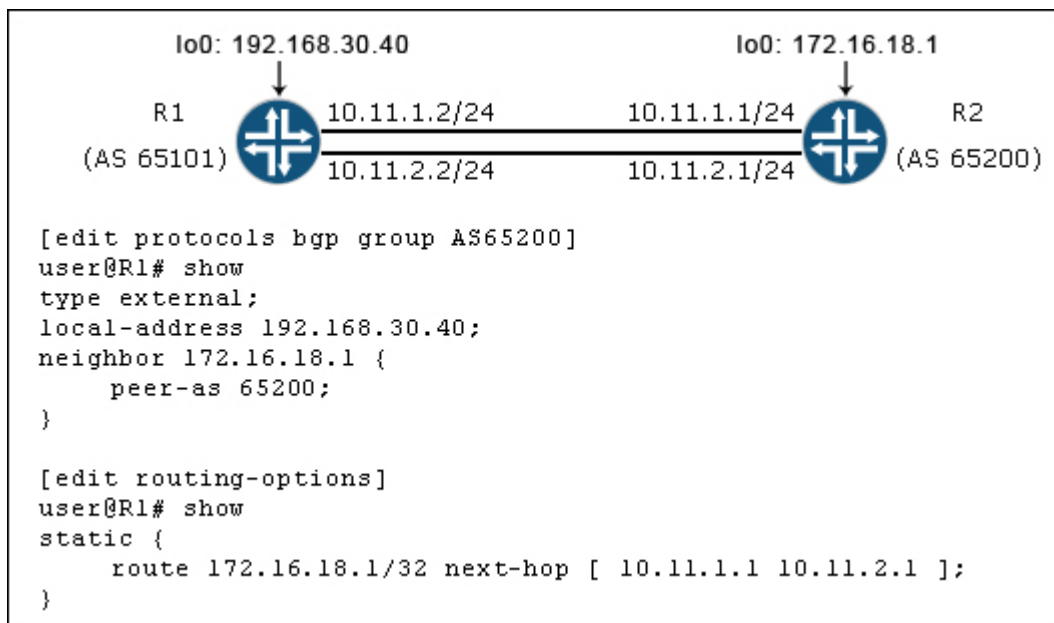
Version : DEMO

1.Which two types of LSAs have a domain scope? (Choose two.)

- A. Type 7
- B. Type 2
- C. Type 10
- D. Type 5

Answer: CD

2.Click the Exhibit button.



Referring to the exhibit, what must be added to the existing configuration to ensure that per-prefix load balancing occurs?

- A. multihop
- B. keep all
- C. multipath
- D. family inet unicast

Answer: A

3.You are asked to configure a new Layer 3 VPN.

In this scenario, which routing-instance type must be used?

- A. vpls
- B. evpn
- C. vrf
- D. 12vpn

Answer: C

4.Which authentication strategy authenticates IS-IS hello PDUs only?

- A. interface authentication
- B. area authentication
- C. domain authentication
- D. level authentication

Answer: A

5. Click the Exhibit button.

```
[edit interfaces]
user@router# show
ge-1/0/0 {
  unit 0 {
    family inet {
      filter {
        input inbound_filter;
        output outbound_filter;
      }
      policer {
        input inbound_policer;
        output outbound_policer;
      }
      address 10.10.100.1/24;
    }
  }
}
```

Referring to the exhibit, in which order will ICMP traffic be processed by the configured filters and policers for interface ge-1/0/0?

- A. input filter, input policer, output policer, output filter
- B. input policer, input filter, output policer, output filter
- C. input filter, input policer, output filter, output policer
- D. input policer, input filter, output filter, output policer

Answer: D

Explanation:

Reference:

https://www.juniper.net/documentation/en_US/junos/topics/concept/policer-order-of-operations-with-firewall-filters.html