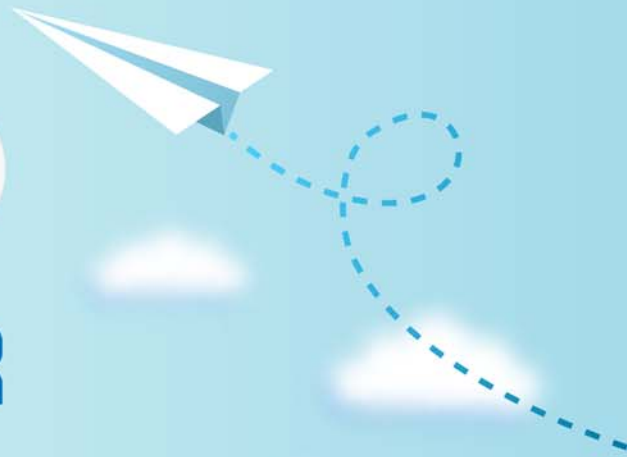


CERTPARK



QUESTION & ANSWER



CERTPARK.COM

Accurate Study Guides,
High Passing Rate!
provides update
free of charge
in one year!



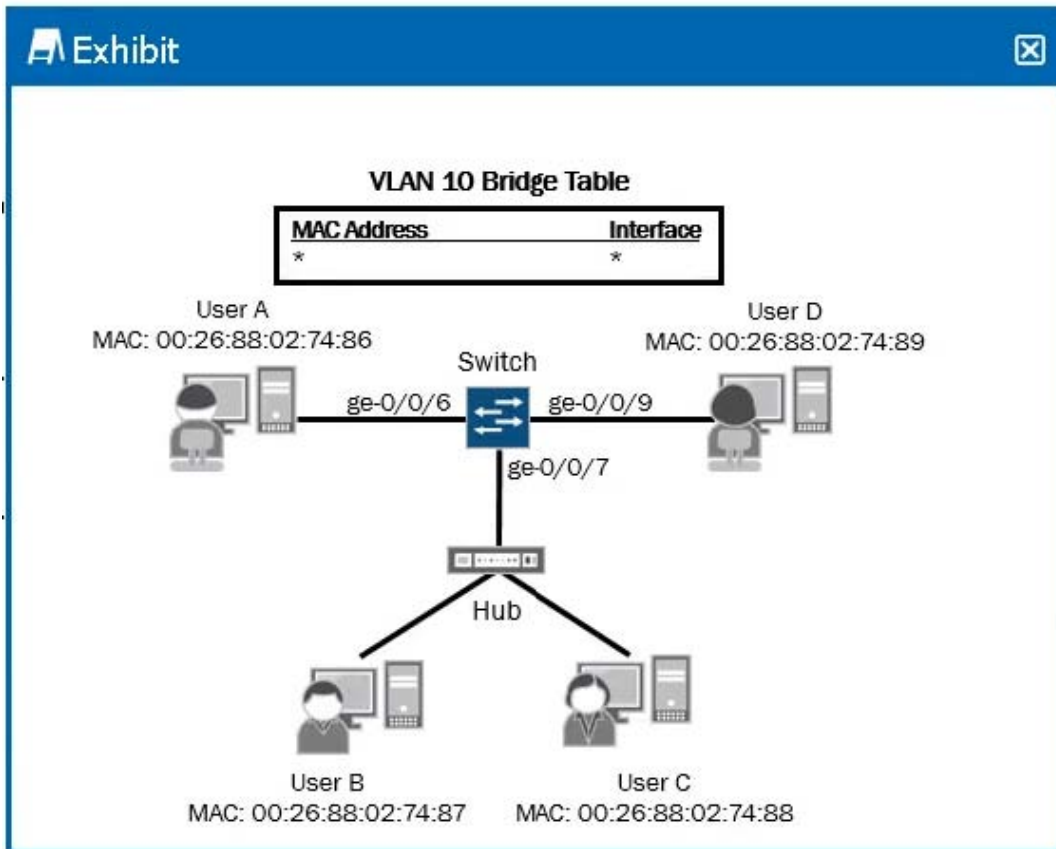
<https://www.certpark.com>

Exam : **JN0-691**

Title : Junos Troubleshooting

Version : DEMO

1.Click the Exhibit button.



Referring to the exhibit, which two behaviors are expected if User B sends a frame with a destination MAC address of 00:26:88:02:74:88? (Choose two.)

- A. The frame will be received and processed by all host devices.
- B. The switch will receive and forward the frame.
- C. The frame will be received and processed by the User C device only.
- D. The switch will receive and discard the frame.

Answer: B,C

2.What are three physical interface properties? (Choose three.)

- A. clocking
- B. protocol family
- C. maximum transmission unit
- D. frame check sequence
- E. virtual circuit identifier

Answer: A,C,D

3.What are three valid types of boot media on a Junos device? (Choose three.)

- A. flash drive
- B. optical drive
- C. emergency boot media
- D. hard disk

E. NVRAM

Answer: A,C,D

4. You must verify end-to-end connectivity within your network.

Which two troubleshooting tools meet this objective? (Choose two.)

A. ping

B. SNMP

C. traceroute

D. RMON

Answer: A,C

5. You must prepare a list of files that can be deleted to recover space on a Junos device.

Which command will accomplish this task?

A. show system storage

B. request system storage cleanup

C. request system download clear

D. show system resource-cleanup

Answer: B