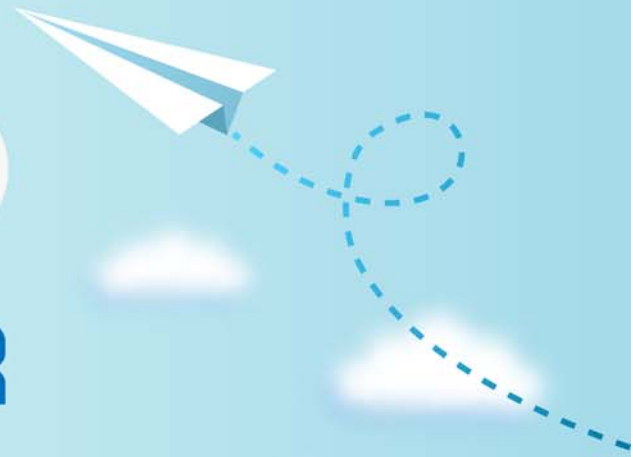


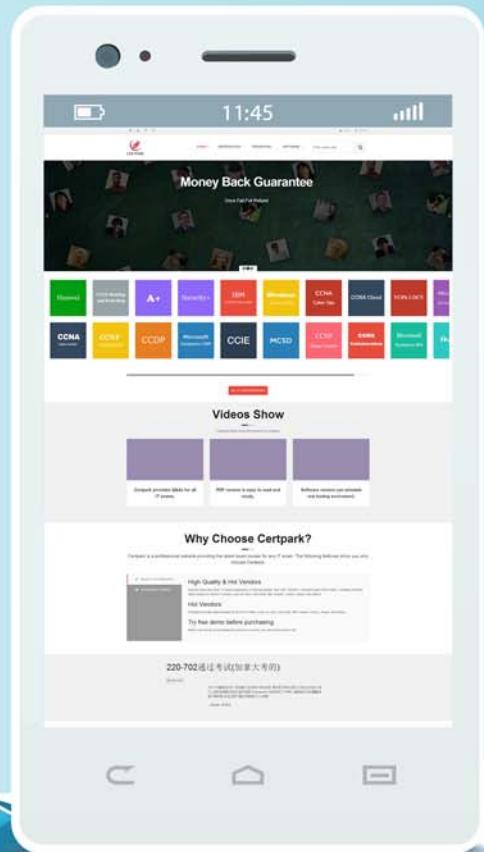
# CERTPARK

## QUESTION & ANSWER



CERTPARK.COM

Accurate Study Guides,  
High Passing Rate!  
provides update  
free of charge  
in one year!



<https://www.certpark.com>

**Exam : MSPF**

**Title : Managing Successful  
Programmes Foundation**

**Version : DEMO**

1.Which of the following statements about the programme management environment is true?

1. Programmes respond to economic influences on corporate strategies
  2. Programmes initiate, monitor and align the projects
- A. Only 1 is true
  - B. Only 2 is true
  - C. Both land 2are true
  - D. Neither 1 or 2 is true

**Answer: C**

2.Which part of the scope of programme quality is MOST likely to be concerned with making best use of skills and experience?

- A. Standards management
- B. People management
- C. Process management
- D. Communications management

**Answer: B**

3.What programme role is MOST likely to also have a role within a project board to represent the interests of the business?

- A. Programme Office
- B. Programme Manager
- C. Programme Board
- D. Business Change Manager

**Answer: D**

4.Which information is included in Benefit Profiles?

- A. Scheduled reviews
- B. Dependent capabilities
- C. Procedures to avoid double counting
- D. Information audit requirements

**Answer: B**

5.Which of the following statements about the Business Change Manager's responsibilities is true?

1. Aligns the development and delivery of capabilities with the Blueprint
  2. Aligns the programme with corporate strategy
- A. Only 1 is true
  - B. Only 2 is true
  - C. Both 1 and 2 are true
  - D. Neither 1 or 2 is true

**Answer: D**