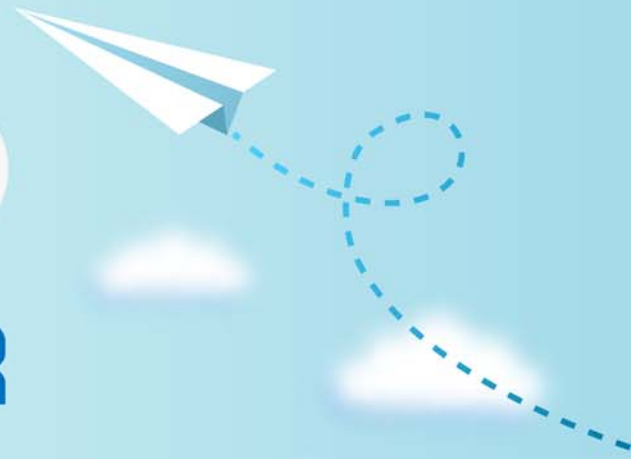


CERTPARK

QUESTION & ANSWER



CERTPARK.COM

Accurate Study Guides,
High Passing Rate!
provides update
free of charge
in one year!



<https://www.certpark.com>

Exam : NS0-101

**Title : NetApp Accredited Sales
Professional Exam**

Version : DEMO

1.What are two benefits of using NetApp Protection Manager? (Choose two.)

- A. centralized management of multiple NetApp devices
- B. simplified management for D2D backup and restore
- C. simplified management for data replication
- D. centralized chargeback reporting

Answer: B,C

2.A customer is experiencing both explosive growth of e-mail and increasing demands around compliance. What should the preferred integrated solution for this customer include? (Choose two.)

- A. Symantec Enterprise Vault
- B. NetApp SnapLock
- C. Netbackup Vault
- D. NetApp SnapVault

Answer: A,B

3.Which three benefits is a customer likely to derive when using the NetApp SnapManager for Exchange solution in their messaging environment? (Choose three.)

- A. virus-free email and attachments
- B. recovery in minutes
- C. classified and categorized email
- D. simplified management with automated backups
- E. quicker and easier storage provisioning

Answer: B,D,E

4.Companies running technical applications are continuously looking for ways to accomplish which two key business objectives? (Choose two.)

- A. accelerate time to market
- B. lower costs
- C. shorten backup windows
- D. maintain data recovery capability

Answer: A,B

5.NetApp SnapManager software enables efficient backups to be completed in ____.

- A. seconds
- B. minutes
- C. hours
- D. days

Answer: A