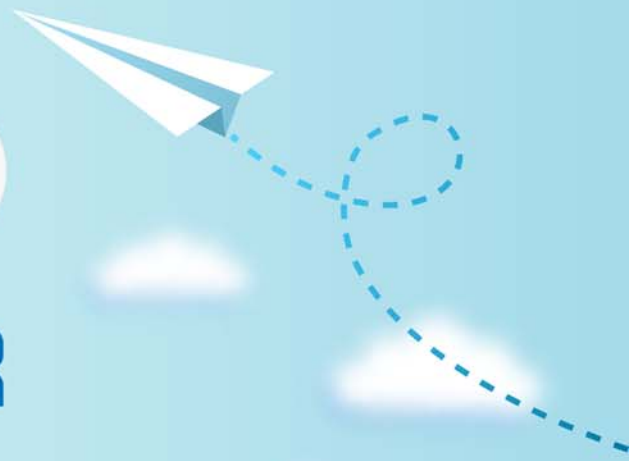


CERTPARK



QUESTION & ANSWER



CERTPARK.COM

Accurate Study Guides,
High Passing Rate!
provides update
free of charge
in one year!



<https://www.certpark.com>

Exam : **NS0-191**

Title : NetApp Certified Support
Engineer

Version : DEMO

1. Click the Exhibit tab.

```
cluster::> volume show -vserver NewSVM -volume * -fields policy, junction-path
vserver volume policy junction-path
-----
NewSVM root new_policy /
NewSVM vol_nfs policy1 /vol_nfs
2 entries were displayed.

cluster::> export-policy rule show -vserver NewSVM -policyname *
Policy Rule Access Client RO
Vserver Name Index Protocol Match Rule
-----
NewSVM default 1 nfs 0.0.0.0/0 any
NewSVM new_policy 1 nfs 1.2.3.4 sys
NewSVM policy1 1 nfs 192.168.10.10 sys
3 entries were displayed.
```

The customer configured an SVM called “NewSVM” for NFS, configured the volume, “vol_nfs”, mounted at “/vol_nfs”, and set up NFSv3 as shown in the exhibit. However, if they try to mount from the client with IP address 192.168.10.10, they receive a “permission denied” error.

In this scenario, which action will solve the error condition?

- A. Add a rule to the default export policy to Include the -clientmatch 192.168.10.0/24 parameter.
- B. Stop and start NewSVM.
- C. Associate a correct export policy to the root volume (/) of NewSVM.
- D. Configure the default route for NewSVM correctly.

Answer: B

2. Microsoft SQL Server is being hosted from a Microsoft Hyper-V cluster and is mounting a LUN from NetApp storage that contains its working databases.

In this scenario, which product would be used to ensure that consistent Snapshot copies of the database are obtained?

- A. Snap Manager for MS Exchange
- B. Snap Manager for Virtual Infrastructure
- C. Snap Manager For SQL server
- D. Snap Manager for Hyper-V

Answer: C

3. You are preparing to implement a storage virtual machine (SVM) in a SAN configuration. You need to eliminate single points of failure and enable the system to survive component failures.

According to NetApp, what is the recommended minimum number of paths per LUN connecting to each node being used by an SVM in a cluster?

- A. 4
- B. 2
- C. 1
- D. 3

Answer: B

4. An administrator on a clustered Data ONTAP 8.3.1 system created a FlexClone of a volume containing a LUN, but the new LUN is offline and cannot be seen by the client.

In this scenario, which two actions will solve the problem? (Choose two.)

- A. The LUN must be mapped to an initiator group.
- B. The new volume must be split from the parent volume before the LUN can be used.
- C. The LUN must be renamed to be different from the parent LUN.
- D. The LUN needs to be brought online.

Answer: AD

5.A customer is using DP SnapMirror replication between two clusters. The source cluster is using Clustered Data ONTAP 8.2.3

Which two versions are acceptable for the destination cluster to be operating? (Choose two.)

- A. 8.1.4
- B. 8.0.2
- C. 8.3.1
- D. 8.2.3

Answer: AD