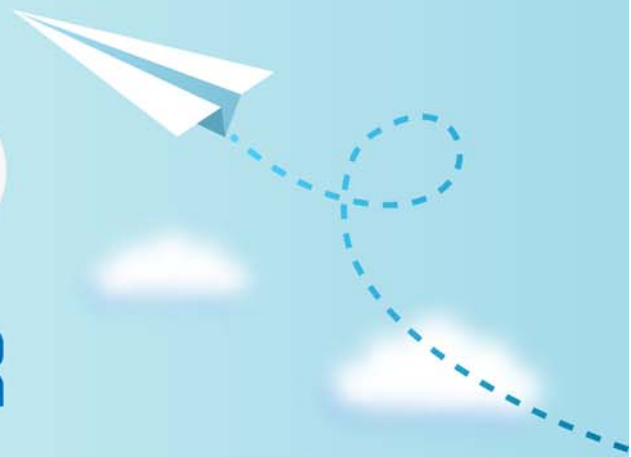


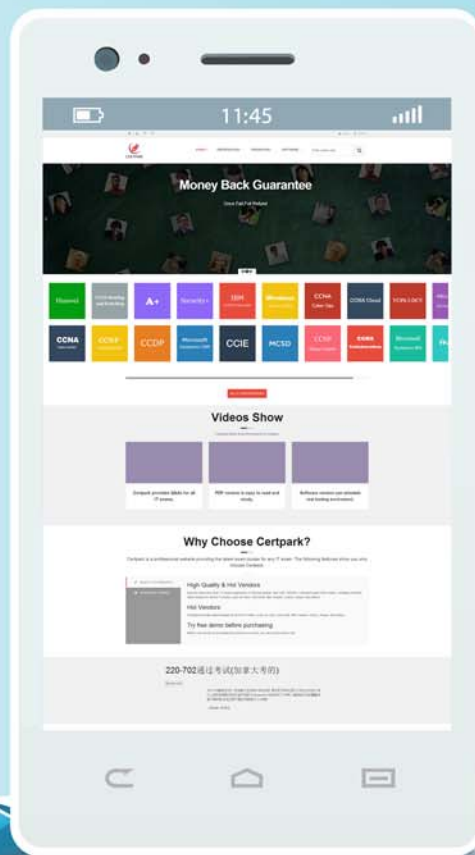
CERTPARK

QUESTION & ANSWER



CERTPARK.COM

Accurate Study Guides,
High Passing Rate!
provides update
free of charge
in one year!



<https://www.certpark.com>

Exam : NS0-403

**Title : NetApp Certified Hybrid
Cloud Implementation
Engineer**

Version : DEMO

1.What are the three pillars of observability in DevOps? (Choose three.)

- A. traces
- B. errors
- C. metrics
- D. versions
- E. logs

Answer: A,C,E

Explanation:

<https://www.dynatrace.com/resources/ebooks/three-pillars-of-observability/#:~:text=Observability%20is%20divided%20into%20three,called%20three%20pillars%20of%20observability.>

2.What are three version control processes? (Choose three.)

- A. Subversion
- B. version
- C. Perforce
- D. revision
- E. Git

Answer: B,C,D

3.A customer was running a traditional application with the data being provided by an NetApp ONTAP NFSv3 export. The customer is now migrating that same application to run with a container in a Kubernetes environment using NetApp Trident.

In this scenario, how would the customer ensure that the new container-based application has access to the same data?

- A. Use the rsync command to copy the data to a worker node in the Kubernetes cluster and allow the kubelet to auto-discover the storage for the container.
- B. Import the volume using the tridentctl command and provide the corresponding persistent volume claim YAML.
- C. Define a backend YAML in Trident and use the kubectrl command to create the backend in the Trident namespace.
- D. Define the connection information for the NFSv3 export in the storage class object and then reference the storage class in the persistent volume claim.

Answer: D

4.You are deploying persistent storage for Kubernetes with NetApp Trident.

In this scenario, what are the two objects that you must create? (Choose two.)

- A. Trident virtual storage pool
- B. Trident backend
- C. Kubemetes StorageClass
- D. Trident volume

Answer: B,D

5.Using Astra Control, which three steps must be completed to protect your Kubernetes-based

applications? (Choose three.)

- A. Set the snapshot retention.
- B. Set the snapshot schedule.
- C. Copy the protection. YAML file to the/etc/ directory.
- D. Choose the application to protect.
- E. Install the appropriate application agent

Answer: A,D,E