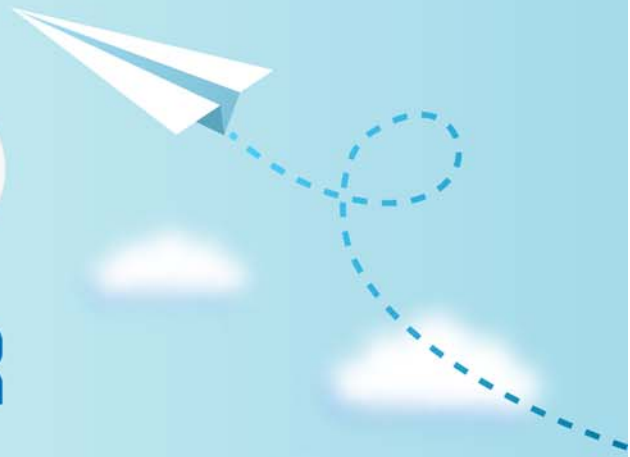


CERTPARK

QUESTION & ANSWER



CERTPARK.COM

Accurate Study Guides,
High Passing Rate!
provides update
free of charge
in one year!



<https://www.certpark.com>

Exam : **PEGACSA72V1**

Title : Certified System Architect
(CSA) 72V1

Version : Demo

1.You have been asked to create a sequence of user forms for a travel reservation process. The forms contain fields that require calculation.

For which reason do you use a declare expression to calculate values?

- A. To perform the calculation in a specific case stage
- B. To perform the calculation when the user clicks a button
- C. To perform the calculation when a form is submitted
- D. To perform the calculation wherever a field is updated

Answer: A

2.Each of the following classes has a data transform named SetValues with the Call data transforms in superclass option selected.

The SetValues data transforms set the properties PropA and PropB, as shown in the following table.

<u>Class</u>	<u>Property</u>	<u>Value</u>
MyCo-App-Data	PropA	1
MyCo-App-Data-A	PropB	2
MyCo-App-Data-A-B	PropA	3
MyCo-App-Data-A-B-C	PropB	4

What is the value of PropA and PropB after the SetValues in MyCo-App-Data-A has been invoked?

- A. PropA=1 and PropB=2
- B. PropA=1 and PropB=4
- C. PropA=3 and PropB=4
- D. PropA=3 and PropB=2

Answer: B

3.A Service Request case type has a CustomerGrade property.

How do you set the value of the CustomerGrade property to Silver when a service request case is created?

- A. Configure the CustomerGrade property with a default value.
- B. Configure the pyDefault data transform to set the CustomerGrade property value.
- C. Configure a declare expression to set the CustomerGrade property value.
- D. Configure the first connector in the first flow rule to set the CustomerGrade property value.

Answer: B

4.DRAG DROP

Match each data page scope to its use case.

<u>Scope</u>	<u>Use Case</u>
Node	Customer details for a complaint case handled by a customer service representative
Thread	Exchange rates available to all accounting applications
Requestor	Order history of the logged-in user that needs to be refreshed on every login

Answer:

<u>Scope</u>	<u>Use Case</u>
Node	Customer details for a complaint case handled by a customer service representative
Thread	Exchange rates available to all accounting applications
Requestor	Order history of the logged-in user that needs to be refreshed on every login

5. In an application, three email addresses (work, home, and other) can be captured for a customer. You use .Email (work) to refer to the work email address.

What type of property is used to capture the email addresses?

- A. Page
- B. Value group
- C. Value list
- D. Page group

Answer: C