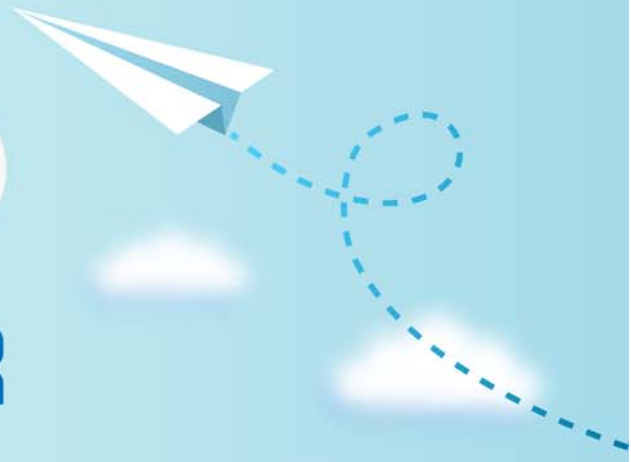


CERTPARK



QUESTION & ANSWER



CERTPARK.COM

Accurate Study Guides,
High Passing Rate!
provides update
free of charge
in one year!



Exam : **PEGACSA74V1**

Title : Certified System Architect
(CSA) 74V1

Version : DEMO

1. Direct Capture of Objectives (DCO) aims to increase which two aspects of application delivery?

(Choose Two)

- A. Accuracy
- B. Speed
- C. Coding
- D. Performance

Answer: AB

Explanation:

Reference: <https://www.pega.com/products/pega-platform/directly-capture-objectives>

2. A list report includes columns for purchase requests and regional cost centers. A manager wants the report to show the total number of purchase requests for each of the regional cost centers.

How do you configure the report definition?

- A. Summarize the regional cost centers by count.
- B. Use the purchase requests column to group the cost centers.
- C. Filter the results so that the report includes only cost center and purchase requests.
- D. Summarize the purchase requests column by count.

Answer: D

3. To qualify for an instant loan, an applicant must be older than 21 and have a monthly income of at least UDS2000.

How do you enforce these restrictions?

- A. Use a single Validate rule with two conditions: one for age and one for income.
- B. Configure the UI controls to only accept values greater than 21 for age and UDS2000 for income.
- C. Use two Edit Validate rules: one for age and one for income.
- D. Use two Validate rules: one for age and one for income.

Answer: A

4. Which two dependencies do you directly enforce with a Wait step? (Choose Two)

- A. Pausing a case until a new child case is created
- B. Pausing a case until a user submits a specified value
- C. Pausing a case until another case (or all cases) reach a specified status
- D. Pausing a case until a predetermined time expires

Answer: BC

5. A requirement states: When a business guest checks out of a hotel, the guest must complete a hotel review to receive a corporate discount.

Select the case type relationship that satisfies the requirement.

- A. Configure checkout request as a child case of hotel review.
- B. Configure both checkout request and hotel review as top-level cases.
- C. Configure hotel review as a child case of the checkout request.
- D. Configure hotel review as a spin-off case of the checkout request.

Answer: C