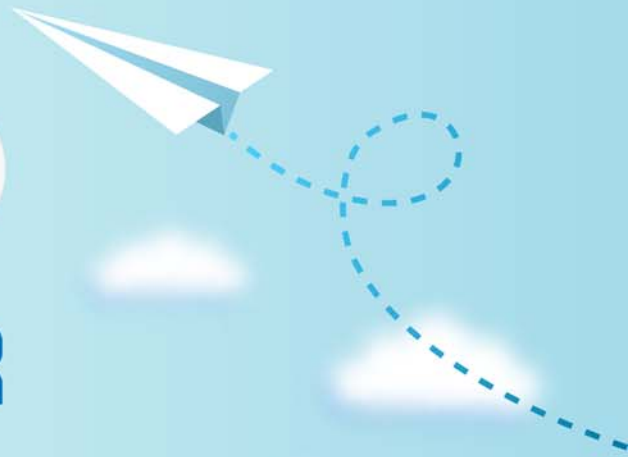


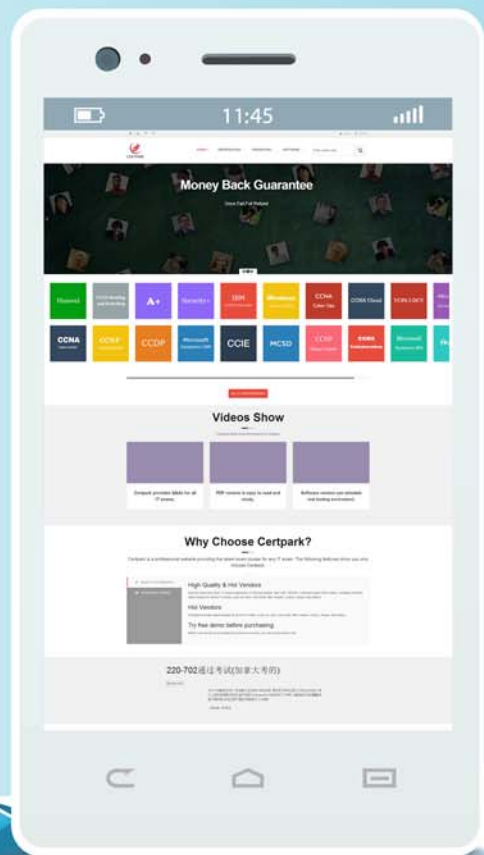
CERTPARK

QUESTION & ANSWER



CERTPARK.COM

Accurate Study Guides,
High Passing Rate!
provides update
free of charge
in one year!



Exam : **RH-302**

Title : Red Hat Certified Engineer
on Redhat Enterprise Linux
4 (Labs)

Version : DEMO

1. Change the root Password to redtophat

Answer and Explanation:

1. Boot the system in Single user mode
2. Use the passwd command

2. Dig Server1.example.com, Resolve to successfully through DNS Where DNS server is 172.24.254.254

Answer and Explanation:

```
#vi /etc/resolv.conf
```

```
nameserver 172.24.254.254
```

```
#dig server1.example.com
```

```
#host server1.example.com
```

DNS is the Domain Name System, which maintains a database that can help your computer translate domain names such as www.Redhat.com to IP addresses such as 216.148.218.197. As no individual DNS server is large enough to keep a database for the entire Internet, they can refer requests to other DNS servers.

DNS is based on the named daemon, which is built on the BIND (Berkeley Internet Name Domain) package developed through the Internet Software Consortium Users wants to access by name so DNS will interpret the name into ip address. You need to specify the Address if DNS server in each and every client machine. In Redhat Enterprise Linux, you need to specify the DNS server into /etc/resolv.conf file. After Specifying the DNS server address, you can verify using host, dig and nslookup commands.

3. Create the partition having 100MB size and mount it on /mnt/neo

Answer and Explanation:

1. Use fdisk /dev/hda-> To create new partition.
2. Type n-> For New partitions
3. It will ask for Logical or Primary Partitions. Press l for logical.
4. It will ask for the Starting Cylinder: Use the Default by pressing Enter Key.
5. Type the Size: +100M-> You can Specify either Last cylinder of Size here.
6. Press P to verify the partitions lists and remember the partitions name.
7. Press w to write on partitions table.

8. Either Reboot or use partprobe command.
9. Use `mkfs -t ext3 /dev/hda?` Where ? is your partition number
10. Or
11. `mke2fs -j /dev/hda?` To create ext3 filesystem.
12. `mkdir /mnt/neo`
13. `vi /etc/fstab`
14. Write:
15. `/dev/hda? /mnt/neo ext3 defaults 1 2`
16. Verify by mounting on current Sessions also:
17. `mount /dev/hda? /mnt/neo`

4. Your System is going use as a router for 172.24.0.0/16 and 172.25.0.0/16. Enable the IP Forwarding.

Answer and Explanation:

1. `echo "1" >/proc/sys/net/ipv4/ip_forward`
2. `vi /etc/sysctl.conf`
`net.ipv4.ip_forward=1`

/proc is the virtual filesystem, containing the information about the running kernel. To change the parameter of running kernel you should modify on /proc. From Next reboot the system, kernel will take the value from /etc/sysctl.conf.

5. Some users home directory is shared from your system. Using `showmount -e localhost` command, the shared directory is not shown. Make access the shared users home directory.

Answer and Explanation:

1. Verify the File whether Shared or not ? : `cat /etc/exports`
2. Start the nfs service: `service nfs start`
3. Start the portmap service: `service portmap start`
4. Make automatically start the nfs service on next reboot: `chkconfig nfs on`
5. Make automatically start the portmap service on next reboot: `chkconfig portmap on`
6. Verify either sharing or not: `showmount -e localhost`

7. Check that default firewall is running on system ? if running flush the iptables using iptables -F and stop the iptables service.

6. neo user tried by:

```
dd if=/dev/zero of=/home/neo/somefile bs=1024 count=70
```

files created successfully. Again neo tried to create file having 70K using following command:

```
dd if=/dev/zero of=/home/neo/somefile bs=1024 count=70
```

But he is unable to create the file. Make the user can create the file less then 70K.

Answer and Explanation:

Very Tricky from redhat. Actually is giving scenario to you to implement quota to neo user. You should apply the quota to neo user on /home that neo user shouldn't occupied space more than 70K.

1. vi /etc/fstab

```
LABEL=/home /home ext3 defaults,usrquota 0 0
```

To enable the quota on filesystem you should mount the filesystem with usrquota for user quota and grpquota for group quota.

2. touch /home/aquota.user ->Creating blank quota database file.

3. mount -o remount /home-> Remounting the /home with updated mount options.

You can verify that /home is mounted with usrquota options or not using mount command.

4. quotacheck -u /home ->Initialization the quota on /home

5. edquota -u neo /home-> Quota Policy editor

See the snapshot

Disk quotas for user neo (uid 500):

Filesystem	blocks	soft	hard	inodes	soft	hard
/dev/mapper/vo-myvol	2	30	70	1	0	0

Can you set the hard limit 70 and soft limit as you think like 30.

Verify using the repquota /home command.

7. One Logical Volume is created named as myvol under vo volume group and is mounted. The Initial Size of that Logical Volume is 124MB. Make successfully that the size of Logical Volume 245MB without losing any data. The size of logical volume 240MB to 255MB will be acceptable.

Answer and Explanation:

1. First check the size of Logical Volume: `lvdisplay /dev/vg/myvol`
2. Increase the Size of Logical Volume: `lvextend -L+121M /dev/vg/myvol`
3. Make Available the size on online: `resize2fs /dev/vg/myvol`
4. Verify the Size of Logical Volume: `lvdisplay /dev/vg/myvol`
5. Verify that the size comes in online or not: `df -h`

We can extend the size of logical Volume using the `lvextend` command. As well as to decrease the size of Logical Volume, use the `lvresize` command. In LVM v2 we can extend the size of Logical Volume without unmount as well as we can bring the actual size of Logical Volume on online using `ext2online` command.

8. Quota is implemented on `/data` but not working properly. Find out the Problem and implement the quota to user1 to have a soft limit 60 inodes (files) and hard limit of 70 inodes (files).

Answer and Explanation:

Quotas are used to limit a user's or a group of users' ability to consume disk space. This prevents a small group of users from monopolizing disk capacity and potentially interfering with other users or the entire system. Disk quotas are commonly used by ISPs, by Web hosting companies, on FTP sites, and on corporate file servers to ensure continued availability of their systems.

Without quotas, one or more users can upload files on an FTP server to the point of filling a filesystem. Once the affected partition is full, other users are effectively denied upload access to the disk. This is also a reason to mount different filesystem directories on different partitions. For example, if you only had partitions for your root (`/`) directory and swap space, someone uploading to your computer could fill up all of the space in your root directory (`/`). Without at least a little free space in the root directory (`/`), your system could become unstable or even crash.

You have two ways to set quotas for users. You can limit users by inodes or by kilobytesized disk blocks. Every Linux file requires an inode. Therefore, you can limit users by the number of files or by absolute space. You can set up different quotas for different filesystems. For example, you can set different quotas for users on the `/home` and `/tmp` directories if they are mounted on their own partitions.

Limits on disk blocks restrict the amount of disk space available to a user on your system.

Older versions of Red Hat Linux included `LinuxConf`, which included a graphical tool to configure quotas.

As of this writing, Red Hat no longer has a graphical quota configuration tool. Today, you can configure

quotas on RHEL only through the command line interface.

1. vi /etc/fstab /dev/hda11 /data ext3 defaults,usrquota 1 2

2. Either Reboot the System or remount the partition.

Mount -o remount /dev/hda11 /data

3. touch /data/aquota.user

4. quotacheck -ufm /data

5. quotaon -u /data

6. edquota -u user1 /data and Specified the Soft limit and hard limit on opened file.

To verify either quota is working or not:

Soft limit specify the limit to generate warnings to users and hard limit can't cross by the user. Use the quota command or repquota command to monitor the quota information.

9. One Logical Volume named lv1 is created under vg0. The Initial Size of that Logical Volume is 100MB. Now you required the size 500MB. Make successfully the size of that Logical Volume 500M without losing any data. As well as size should be increased online.

Answer and Explanation:

The LVM system organizes hard disks into Logical Volume (LV) groups. Essentially, physical hard disk partitions (or possibly RAID arrays) are set up in a bunch of equal sized chunks known as Physical Extents (PE). As there are several other concepts associated with the LVM system, let's start with some basic definitions:

. Physical Volume (PV) is the standard partition that you add to the LVM mix.

Normally, a physical volume is a standard primary or logical partition. It can also be a RAID array.

. Physical Extent (PE) is a chunk of disk space. Every PV is divided into a number of equal sized PEs. Every PE in a LV group is the same size. Different LV groups can have different sized PEs.

. Logical Extent (LE) is also a chunk of disk space. Every LE is mapped to a specific PE.

. Logical Volume (LV) is composed of a group of LEs. You can mount a filesystem such as /home and /var on an LV.

. Volume Group (VG) is composed of a group of LVs. It is the organizational group for LVM. Most of the commands that you'll use apply to a specific VG.

1. Verify the size of Logical Volume: `lvdisplay /dev/vg0/lv1`

2. Verify the Size on mounted directory: `df -h` or `df -h` mounted directory name
3. Use : `lvextend -L+400M /dev/vg0/lv1`
4. `resize2fs /dev/vg0/lv1` to bring extended size online.
5. Again Verify using `lvdisplay` and `df -h` command.

10. Create one partitions having size 100MB and mount it on /data.

Answer and Explanation:

1. Use `fdisk /dev/hda` ->To create new partition.
2. Type `n`-> For New partitions
3. It will ask for Logical or Primary Partitions. Press `l` for logical.
4. It will ask for the Starting Cylinder: Use the Default by pressing Enter Key.
5. Type the Size: `+100M` ->You can Specify either Last cylinder of Size here.
6. Press `P` to verify the partitions lists and remember the partitions name.
7. Press `w` to write on partitions table.
8. Either Reboot or use `partprobe` command.
9. Use `mkfs -t ext3 /dev/hda?`

Or

`mke2fs -j /dev/hda?` To create ext3 filesystem.

10. `vi /etc/fstab`

Write:

`/dev/hda? /data ext3 defaults 1 2`

11. Verify by mounting on current Sessions also:

`mount /dev/hda? /data`

11. You are new System Administrator and from now you are going to handle the system and your main task is Network monitoring, Backup and Restore. But you don't know the root password. Change the root password to redhat and login in default Runlevel.

Answer and Explanation:

When you Boot the System, it starts on default Runlevel specified in `/etc/inittab`:

`id?::initdefault:`

When System Successfully boot, it will ask for username and password. But you don't know the root's password. To change the root password you need to boot the system into single user mode. You can pass the kernel arguments from the boot loader.

1. Restart the System.
2. You will get the boot loader GRUB screen.
3. Press a and type 1 or s for single mode
ro root=LABEL=/ rhgb quiet s
4. System will boot on Single User mode.
5. Use passwd command to change.
6. Press ctrl+d

12. There are more than 400 Computers in your Office. You are appointed as a System Administrator. But you don't have Router. So, you are going to use your One Linux Server as a Router. How will you enable IP packets forward?

Answer and Explanation:

1. /proc is the virtual filesystem, we use /proc to modify the kernel parameters at running time.

```
# echo "1" >/proc/sys/net/ipv4/ip_forward
```

2. /etc/sysctl.conf when System Reboot on next time, /etc/rc.d/rc.sysinit scripts reads the file /etc/sysctl.conf.-> To enable the IP forwarding on next reboot also you need to set the parameter.

```
net.ipv4.ip_forward=1
```

Here 0 means disable, 1 means enable.

13. You Completely Install the Redhat Enterprise Linux 5 on your System. While start the system, it's giving error to load X window System. How will you fix that problem and make boot successfully run X Window System.

Answer and Explanation:

Think while Problems occurred on booting System on Runlevel 5 (X Window)

1. /tmp is full or not
2. Quota is already reached
3. Video card or resolution or monitor is misconfigured.

4. xfs service is running or not.

Do These:

1. df -h /tmp /tmp is full remove the unnecessary file
2. quota username if quota is already reached remove unnecessary file from home directory.
3. Boot the System in runlevel 3. you can pass the Kernel Argument from boot loader.
4. Use command: system-config-display It will display a dialog to configure the monitor, Video card, resolution etc.
5. Set the Default Runlevel 5 in /etc/inittab
id:5:initdefault:
6. Reboot the System you will get the GUI login Screen.

14. There are two different networks, 192.168.0.0/24 and 192.168.1.0/24. Your System is in 192.168.0.0/24 Network. One RHEL 5 Installed System is going to use as a Router. All required configuration is already done on Linux Server. Where 192.168.0.254 and 192.168.1.254 IP Address are assigned on that Server. How will make successfully ping to 192.168.1.0/24 Network's Host?

Answer and Explanation:

1. vi /etc/sysconfig/network

GATEWAY=192.168.0.254

OR

vi /etc/sysconf/network-scripts/ifcfg-eth0

DEVICE=eth0

BOOTPROTO=static

ONBOOT=yes

IPADDR=192.168.0.?

NETMASK=255.255.255.0

GATEWAY=192.168.0.254

2. service network restart

Explanation: Gateway defines the way to exit the packets. According to System working as a router for two networks have IP Address 192.168.0.254 and 192.168.1.254.

To get the hosts on 192.168.1.0/24 should go through 192.168.0.254.

15. Make a swap partition having 100MB. Make Automatically Usable at System Boot Time.

Answer and Explanation:

1. Use `fdisk /dev/hda` ->To create new partition.
2. Type `n`-> For New partition
3. It will ask for Logical or Primary Partitions. Press `l` for logical.
4. It will ask for the Starting Cylinder: Use the Default by pressing Enter Key.
5. Type the Size: `+100M` ->You can Specify either Last cylinder of Size here.
6. Press `P` to verify the partitions lists and remember the partitions name. Default System ID is 83 that means Linux Native.
7. Type `t` to change the System ID of partition.
8. Type Partition Number
9. Type 82 that means Linux Swap.
10. Press `w` to write on partitions table.
11. Either Reboot or use `partprobe` command.
12. `mkswap /dev/hda?` ->To create Swap File system on partition.
13. `swapon /dev/hda?` ->To enable the Swap space from partition.
14. `free -m` ->Verify Either Swap is enabled or not.
15. `vi /etc/fstab`
`/dev/hda? swap swap defaults 0 0`
16. Reboot the System and verify that swap is automatically enabled or not.

16. You are a System administrator. Using Log files very easy to monitor the system.

Now there are 50 servers running as Mail, Web, Proxy, DNS services etc. You want to centralize the logs from all servers into on LOG Server. How will you configure the LOG Server to accept logs from remote host ?

Answer and Explanation:

By Default system accept the logs only generated from local host. To accept the Log from other host configure:

1. `vi /etc/sysconfig/syslog`

`SYSLOGD_OPTIONS="-m 0 -r"`

Where

-m 0 disables 'MARK' messages.

-r enables logging from remote machines

-x disables DNS lookups on messages recieved with -r

2. service syslog restart

17. You are giving the debug RHCT exam. The examiner told you that the password of root is redhat. When you tried to login displays the error message and redisplayed the login screen. You changed the root password, again unable to login as a root.

How will you make Successfully Login as a root.

Answer and Explanation:

When root unable to login into the system think:

1. Is password correct?
2. Is account expired?
3. Is terminal Blocked?

Do these Steps:

- . Boot the System on Single user mode.
- . Change the password
- . Check the account expire date by using `chage -l root` command.

If account is expired, set net expire date: `chage -E "NEVER" root`

1. Check the file `/etc/securetty` Which file blocked to root login from certain terminal.
2. If terminal is deleted or commented write new or uncomment.
3. Reboot the system and login as a root.

18. You are giving RHCT Exam and in your Exam paper there is a written, make successfully ping to 192.168.0.254.

Answer and Explanation:

In Network problem thinks to check:

1. IP Configuration: use `ifconfig` command either IP is assigned to interface or not?

2. Default Gateway is set or not?
3. Hostname is set or not?
4. Routing problem is there?
5. Device Driver Module is loaded or not?
6. Device is activated or not?

Check In this way:

1. use ifconfig command and identify which IP is assigned or not.
2. cat /etc/sysconfig/network What, What is written here. Actually here are these parameters.

NETWORKING=yes or no

GATEWAY=x.x.x.x

HOSTNAME=?

NISDOMAIN=?

- Correct the file

3. Use vi /etc/sysconfig/network-scripts/ifcfg-eth0 and check the proper options

DEVICE=eth0

ONBOOT=yes

BOOTPROTO=static

IPADDR=x.x.x.x

NETMASK=x.x.x.x

GATEWAY=x.x.x.x

4. Use service network restart or start command

19. Set the Hostname station?.example.com where ? is your Host IP Address.

Answer and Explanation:

1. hostname station?.example.com This will set the host name only for current session. To set hostname permanently.
2. vi /etc/sysconfig/network
HOSTNAME=station?.example.com
3. service network restart

20. The System you are using is for NFS (Network File Services). Some important data are shared from your system. Make automatically start the nfs and portmap services at boot time.

Answer and Explanation:

We can control the services for current session and for next boot time also. For current Session, we use service servicename start or restart or stop or status. For automatically on next reboot time:

1. `chkconfig servicename on or off`

eg: `chkconfig nfs on`

`chkconfig portmap on`

or

`ntsysv`

Select the nfs and portmap services.

2. Reboot the system and identify whether services are running or not.