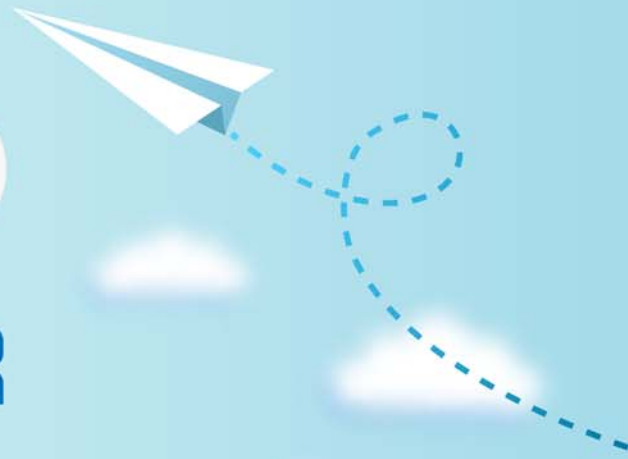


CERTPARK



QUESTION & ANSWER



CERTPARK.COM

Accurate Study Guides,
High Passing Rate!
provides update
free of charge
in one year!



<https://www.certpark.com>

Exam : **TA-002-P**

Title : HashiCorp Certified:
Terraform Associate

Version : DEMO

1.Terraform init can indeed be run only a few times, because, every time terraform init will initialize the project, and download all plugins from the internet repository, regardless of whether they were present or not, and this increases the waiting time

- A. True
- B. False

Answer: B

Explanation:

Re-running init with modules already installed will install the sources for any modules that were added to configuration since the last init, but will not change any already-installed modules. Use upgrade to override this behavior, updating all modules to the latest available source code.

<https://www.terraform.io/docs/commands/init.html>

2.The Terraform language does not support user-defined functions, and so only the functions built in to the language are available for use.

- A. False
- B. True

Answer: B

Explanation:

<https://www.terraform.io/docs/configuration/functions.html>

3.Which of the below configuration file formats are supported by Terraform? (Select TWO)

- A. Node
- B. JSON
- C. Go
- D. YAML
- E. HCL

Answer: B, E

Explanation:

Terraform supports both HashiCorp Configuration Language (HCL) and JSON formats for configurations.

<https://www.terraform.io/docs/configuration/>

4.Please identify the offerings which are unique to Terraform Enterprise, and not available in either Terraform OSS, or Terraform Cloud. Select four.

- A. Audit Logs
- B. Private Network Connectivity
- C. VCS Integration
- D. Sentinel
- E. Clustering

Answer: A, B, E

Explanation:

<https://www.hashicorp.com/products/terraform/pricing/>

5.terraform refresh command will not modify infrastructure, but does modify the state file.

- A. True

B. False

Answer: A

Explanation:

The terraform refresh command is used to reconcile the state Terraform knows about (via its state file) with the real-world infrastructure. This can be used to detect any drift from the last-known state, and to update the state file. This does not modify infrastructure, but does modify the state file.

<https://www.terraform.io/docs/commands/refresh.html>