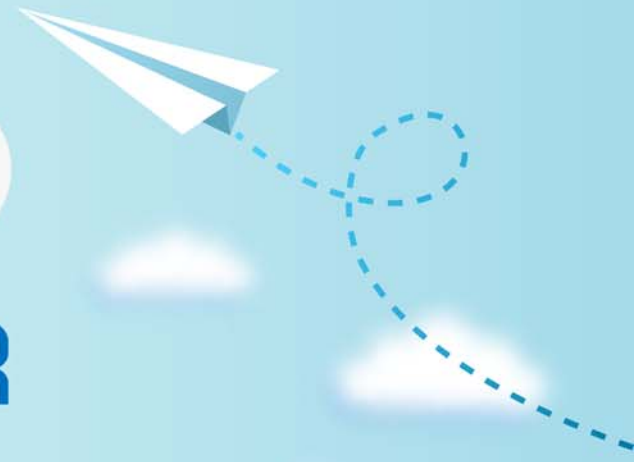


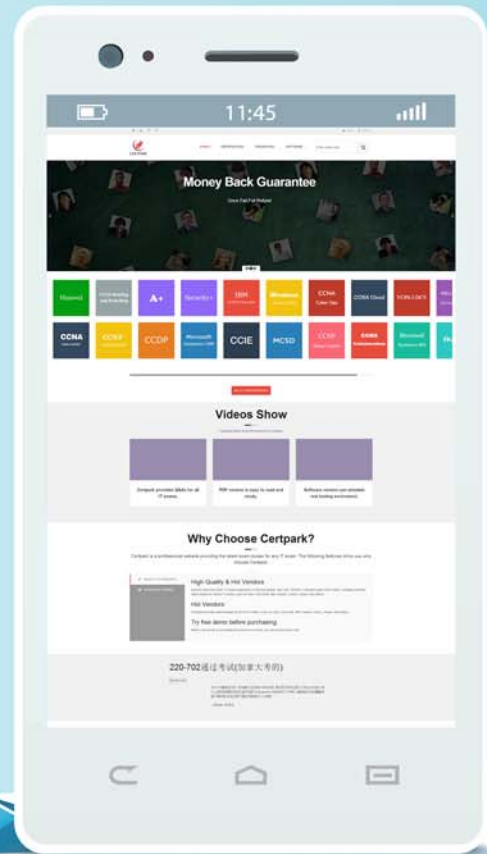
CERTPARK

QUESTION & ANSWER



CERTPARK.COM

Accurate Study Guides,
High Passing Rate!
provides update
free of charge
in one year!



<https://www.certpark.com>

Exam : **TCP-SP**

Title : TIBCO Spotfire Certified
Professional Exam

Version : **DEMO**

1. Where is the smallest rectangle in the treemap visualization positioned?

- A. Bottom-left corner
- B. Top-right corner
- C. Top-left corner
- D. Bottom-right corner

Answer: D

Explanation:

A treemap visualization is a way of displaying large amounts of hierarchically structured data. The space in the visualization is split up into rectangles that are sized and ordered by a quantitative variable. The treemap in Spotfire uses a squarified algorithm, which means that the rectangles in the treemap range in size from the top left corner of the visualization to the bottom right corner, with the largest rectangle positioned in the top left corner and the smallest rectangle in the bottom right corner. For hierarchies, that is, when the rectangles are nested, the same ordering of the rectangles is repeated for each rectangle in the treemap. References: What is a Treemap?, Creating a treemap

2. Which is the right level of permission to be set for a folder in a library?

- A. Access + Full Control
- B. Browse + Modify
- C. Browse + Access
- D. Access + Modify

Answer: C

Explanation:

The right level of permission to be set for a folder in a library depends on the intended use of the folder and its contents. However, the most common and recommended level is Browse + Access, which allows the user or group to access and browse the folder contents, and open and use items found in such folders, but not save or modify them¹. This level of permission ensures that the folder and its items are visible and usable, but not editable or deletable by unauthorized users or groups. It also allows the folder to show subfolders, if the user or group has Browse + Access permission for the subfolders as well². The other levels of permission are either too restrictive or too permissive for most scenarios. For example, Access + Full Control would allow the user or group to execute information links, modify and save items, and change permissions for the folder and its contents, but not browse the folder contents or open analysis files¹. This level of permission is usually reserved for the Library Administrator group, which has full control of the entire library². Browse + Modify would allow the user or group to browse and access the folder contents, and also modify items or save new items, but not change permissions for the folder and its contents¹. This level of permission is suitable for collaborative work, where multiple users or groups can edit and save items in the same folder. However, it also poses a risk of accidental or intentional deletion or modification of items by unauthorized users or groups. Access + Modify would allow the user or group to execute information links, and also modify items or save new items, but not browse the folder contents, open analysis files, or change permissions for the folder and its contents¹. This level of permission is rarely used, as it limits the visibility and usability of the folder and its items, while allowing modification and saving of items.

References:

* Setting Folder Permissions

* Permissions

- * Editing Folder Permissions
- * How to report on library permissions

3. Which three of the following are property control types? Choose 3 answers

- A. Bookmarks
- B. Hyperlinks
- C. List boxes
- D. Drop-down lists
- E. Sliders
- F. Buttons

Answer: C D E

Explanation:

Property controls are devices that can change the content of a property in an easy way. They can be inserted in a text area and configured to use the values from a data table or a fixed list. There are six types of property controls available in TIBCO Spotfire: label, input field, drop-down list, list box, slider, and button¹. Out of these, the options C (list boxes), D (drop-down lists), and E (sliders) are valid property control types. The other options are not property control types. Bookmarks are used to save and restore the state of an analysis². Hyperlinks are used to link to external web pages or documents³. Buttons are used to execute scripts or actions⁴.

References: 1: Details on Property Control - TIBCO Software¹, 2: Bookmarks - TIBCO Software², 3: Hyperlinks - TIBCO Software³, 4: Buttons - TIBCO Software⁴

4. Which custom expression function is used by when you auto-bin a numeric column?

- A. BinByEvenDistributionQ
- B. AutoBinNumeric()
- C. AutoBinByLimitsO
- D. BinBySpecifieLimits()
- E. BinByStdDev()

Answer: B

Explanation:

AutoBinNumeric() is a custom expression function that is used when you auto-bin a numeric column. This function creates a binned column where the value range is divided into intervals based on the number of unique values and the distribution of the data. The function takes one argument, which is the column to bin, and returns a string column with the bin labels. The function is equivalent to right-clicking on a column selector and selecting Auto-bin Column, which creates a temporary, automatic binning on an axis. The function can be used in custom expressions to create permanent binned columns or to apply binning to other visualizations. References: AutoBinNumeric, How to Use Binning

5. What are the three different types of properties that can be linked to a property control? Choose 3 answers

- A. Document Properties
- B. Text Area Properties

- C. Data Table Properties
- D. Column Properties
- E. Visualization Properties

Answer: A C D

Explanation:

Property controls are devices that can change the content of a property in an easy way. They can be linked to three different types of properties: document properties, data table properties, and column properties.

Document properties are properties that are defined for the entire analysis and can be used in expressions, scripts, or filters. Data table properties are properties that are defined for a specific data table and can be used in expressions or scripts. Column properties are properties that are defined for a specific column in a data table and can be used in expressions or scripts. Text area properties and visualization properties are not types of properties that can be linked to a property control, but rather properties of the text area or visualization itself. References: Details on Property Control, Dependent Property Controls in TIBCO Spotfire®