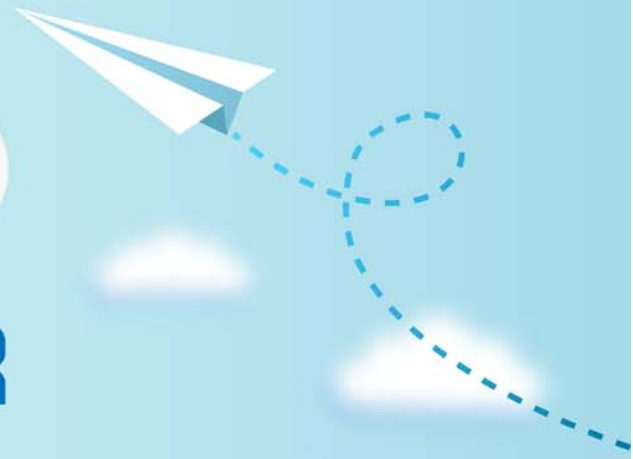


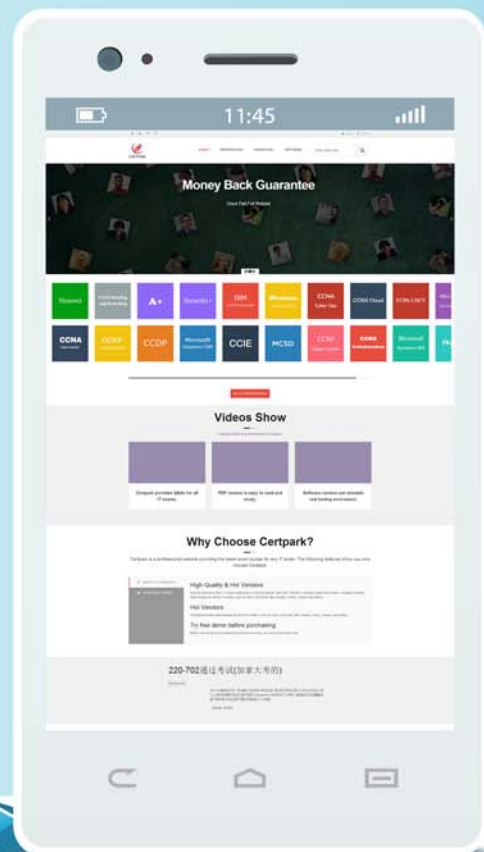
CERTPARK

QUESTION & ANSWER



CERTPARK.COM

Accurate Study Guides,
High Passing Rate!
provides update
free of charge
in one year!



<https://www.certpark.com>

Exam : **VCS-276**

Title : Administration of Veritas
 NetBackup 8.0

Version : DEMO

1.How can an administrator copy an existing backup image of client1.example.com from an Advanced Disk storage unit to a Media Server Deduplication Pool (MSDP)?

- A. run bpimport with the source and the destination storage unit
- B. create a Storage Lifecycle Policy that contains a duplication to the MSDP pool
- C. run bpduplicate with the backup ID and the destination storage unit
- D. run nbreplicate with the backup ID and the destination storage unit

Answer: C

2.An administrator has a backup policy with the following attributes:

5 paths listed in the Backup Selections list

3 clients listed in the Clients list

Allow multiple data streams is selected

Max Jobs per Client value set to 4

How many jobs go Active when the job is started, excluding parent jobs?

- A. 8
- B. 9
- C. 12
- D. 15

Answer: C

3.How can an administrator determine the storage and database paths for a Media Server Deduplication Pool?

- A. run the Configure Disk Storage Server wizard for the MSDP
- B. view Storage Unit > View Properties for the MSOP storage unit
- C. view Disk Pool > Disk volumes for the MSDP disk pool
- D. view Storage Server > Properties for the storage server

Answer: D

4.Which command can an administrator run to test and analyze connections between master servers, media servers, and clients for multiple Net Back up ports?

- A. bpererror
- B. bpconfig
- C. bpresolver
- D. bptestnetconn

Answer: D

5.A Netbackup environment suffers from intermittent network outages between the Media Server Drduplication Pool (MSOP) media server and clients during the backup window. This results in multiple backup failures.

Mow should an administrator overcome the backup failure issue?

- A. enable Network Resiliency
- B. configure client-side deduplication
- C. increase the client connect timeout
- D. increase the CR_STATS_TIMLR interval

Answer: A