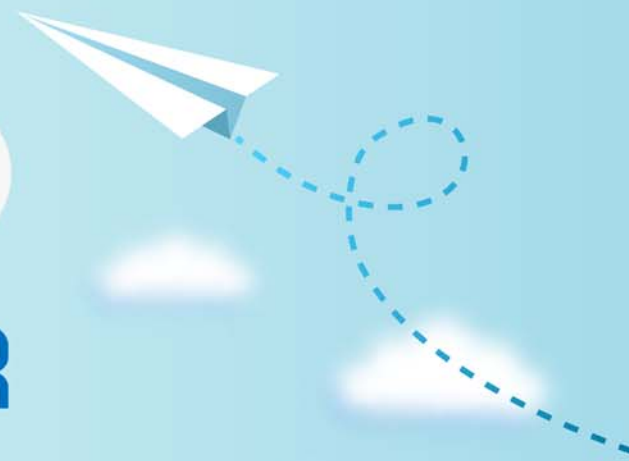


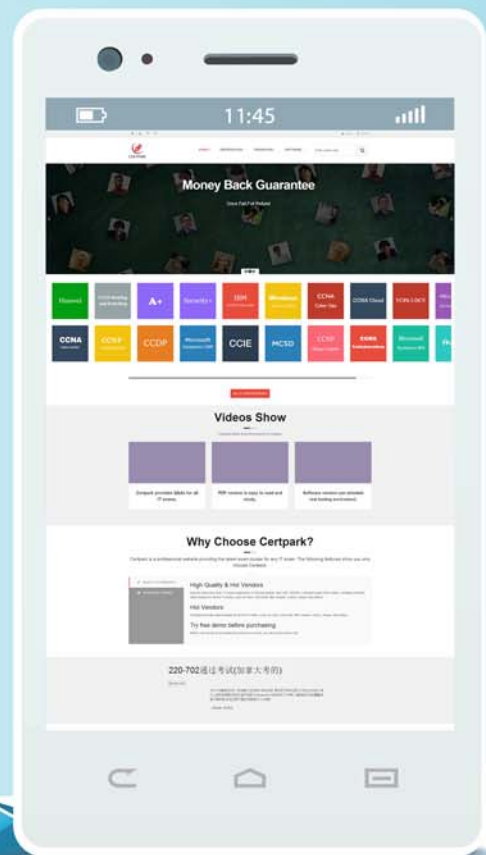
CERTPARK

QUESTION & ANSWER



CERTPARK.COM

Accurate Study Guides,
High Passing Rate!
provides update
free of charge
in one year!



Exam : **VCS-324**

Title : Administration of Veritas
Enterprise Vault 12.3

Version : DEMO

1. When a user is enabled for archiving, an e-mail is sent from the Enterprise Vault system mailbox. Which permissions must be granted to the Vault Service Account for this feature to work properly?

- A. Log on as a service
- B. Receive As
- C. log on remotely
- D. Send As

Answer: C

2. An administrator needs to remove an Index Server from an Index Server Group and place it in another group.

When can this process be completed?

- A. during the processing time of the Index Administration task
- B. before archived items have been indexed
- C. when the Indexing Service is stopped
- D. after indexes have been put into Backup mode

Answer: B

3. Which step(s) are necessary to install Message Queuing (MSMQ) in preparation for configuring a Windows cluster?

- A. use Computer Manager to manually move C:\windows\system32\msmq to a shared cluster disk resource
- B. use Windows Failover Cluster Manager to add the Message Queuing resource; in the properties add the MSMQ disk to the resource list
- C. use the Component Services snap-in to manually move C:\windows\system32\msmq to a shared cluster disk resource
- D. use Windows Failover Cluster Manager to add the MSMQ resource; add C:\windows\system32\msmq to the resource list and convert it to a shared disk

Answer: B

4. Which two archive types are supported by the Veritas Enterprise Vault 12.3 Move Archive function? (Select two.)

- A. File System Archiving (FSA) archives
- B. Exchange Mailbox archives
- C. Exchange public folder archives
- D. Shared archives
- E. Exchange Journal archives

Answer: B,E

5. Which process is responsible for shortcut processing after an Archive Move to a different Veritas Enterprise Vault 12.3 site?

- A. Indexing Service on the source Enterprise Vault server
- B. Indexing Service on the destination Enterprise Vault server
- C. Archiving Task on the destination Enterprise Vault server
- D. Archiving Task on the source Enterprise Vault server

Answer: C