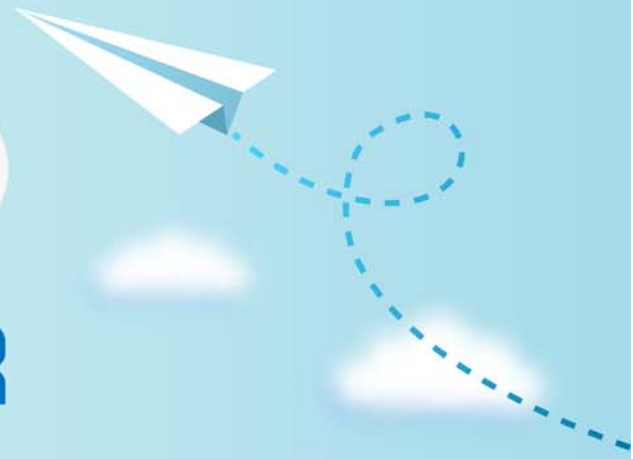


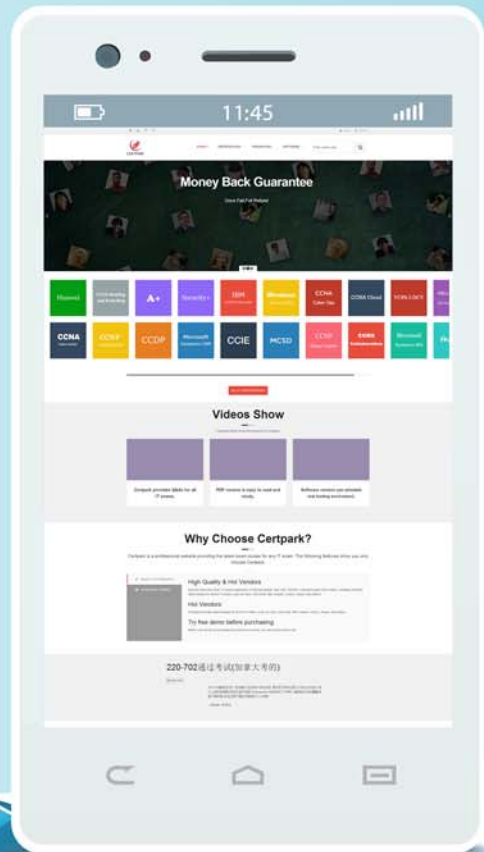
CERTPARK

QUESTION & ANSWER



CERTPARK.COM

Accurate Study Guides,
High Passing Rate!
provides update
free of charge
in one year!



Exam : 46150T

**Title : APSS Avaya Solutions for
Midsized Customers Online
Test**

Version : DEMO

1.A customer inquires about deploying Avaya IP Office™ via the cloud to multiple sites, with each site having 30 to 50 employees.

Which Avaya IP Office edition would be used into meet this need as a cloud service?

- A. Preferred Edition
- B. Basic Edition
- C. Server Edition
- D. Select Edition
- E. Essential Edition

Answer: E

2.Which of the following platforms can be used in an on-premises UC unified communications solution based on Avaya IP Office™ Basic, Essential or Preferred Edition?

- A. Hyper-V
- B. Cloud computing platform
- C. Linux Server
- D. IP500 V2
- E. VMware

Answer: D

3.A customer seeks communications for 150 employees, with access to advanced mobility and customer-engagement features, packaged as an easy-to-deploy appliance.

Which Avaya IP Office™ edition best fits this need?

- A. Basic Edition
- B. Select Edition
- C. Essential Edition
- D. Preferred Edition
- E. Server Edition

Answer: D

4.Which of the following hardware platforms can be used in an on-premises UC unified communications solution based on Avaya IP Office™ Server or Select Edition? (Select four.)

- A. Hyper-V
- B. IP500 V2
- C. VMware
- D. Linux Server
- E. Cloud computing platform

Answer: ACDE

5.Which of the following Avaya IP Office™ editions would you position as options for a customer seeking communications for 450 employees who require access to advanced features and high availability/resiliency? (Select two.)

- A. Essential Edition
- B. Server Edition
- C. Preferred Edition

D. Select Edition

E. Basic Edition

Answer: BD